



**HONORING THE PAST. PAVING THE FUTURE.**

# HISTORY OF PENNDOT

COLIN MCCLENAHEN, PENNDOT  
ROADWAY PROGRAMS MANAGER



# OVERVIEW



- WELCOME TO PITTSBURGH, PENNSYLVANIA
- BRIEF OVERVIEW OF PENNDOT'S HISTORY
- OUR NEED TO MODERNIZE
- PENNDOT'S ROUGHNESS & FRICTION EQUIPMENT
- PENNDOT & RPUG

# WELCOME TO STEEL CITY



- PENNDOT HOSTED RPUG 33 YEARS AGO
- STEEL CITY, CITY OF BRIDGES, CITY OF CHAMPIONS, BLITZBURG, IRON CITY
- ONE OF AMERICA'S MOST ICONIC TRANSPORTATION LANDSCAPES:
  - 446 BRIDGES
  - 5 ACTIVE ROADWAY TUNNELS (IT'S NOT JUST YOU, EVEN THE GPS GETS CONFUSED)
  - A CITY CARVED BY THREE RIVERS
- HOME OF THE PITTSBURGH TOILET (GOOGLE IT)
- A CITY WITH IT'S ON DIALECT (GLAD "YINZ" ARE HERE!)

# DEPARTMENT OF HIGHWAYS

- GOVERNOR SAMUEL PENNYPACKER SIGNED INTO LAW THE CREATION OF THE DEPARTMENT OF HIGHWAYS IN 1903
- ONE OF THE FIRST IN THE COUNTRY
- MISSION WAS CENTERED AROUND HIGHWAYS
- RAPID EXPANSION IN LATE 1960s
- IN 1967, GOVERNOR SHAFER URGED MODERNIZATION



# WHY MODERNIZATION?

- CONSOLIDATION OF DUTIES
- MULTIMODAL EXPANSION
- INTEGRATED POLICY PLANNING
- FEDERAL ALIGNMENT



# PENNSYLVANIA DEPARTMENT OF TRANSPORTATION

- LAUNCHED ON JULY 1, 1970
- GOVERNOR SHAFER SWORE IN VICTOR W. ANCKAITIS AS THE FIRST SECRETARY OF TRANSPORTATION
- "GROUND, AIR AND WATER – WE NEED ALL MODES OF TRANSPORTATION. WE WILL ENDEAVOR TO PREPARE A TOTAL TRANSPORTATION PLAN FOR THE STATE."



# PENNSYLVANIA DEPARTMENT OF TRANSPORTATION



- "PENNDOT" WAS IMMEDIATELY ADOPTED
- MULTIMODAL TRANSPORTATION AT PENNDOT PROVIDES FINANCIAL SUPPORT AND OVERSIGHT FOR:
  - AVIATION AND AIRPORTS
  - PORTS AND WATERWAYS
  - PASSENGER AND FREIGHT RAIL
  - PUBLIC TRANSPORTATION
  - BICYCLE AND PEDESTRIAN NETWORKS

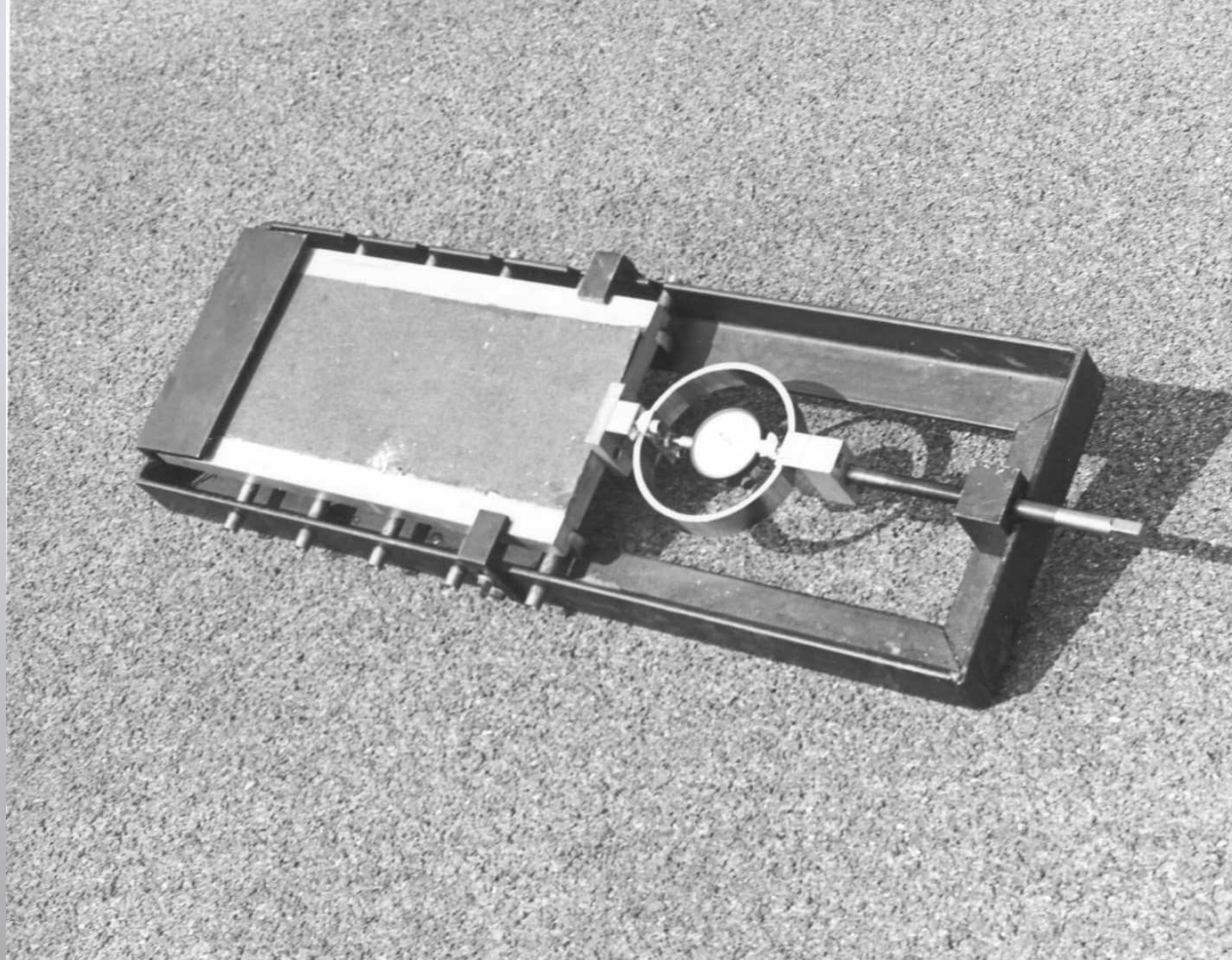
# SKID FRICTION TESTING



# SKID FRICTION TESTING



DOES  
ANYONE  
KNOW WHAT  
THIS IS?



# SKID FRICTION TESTING



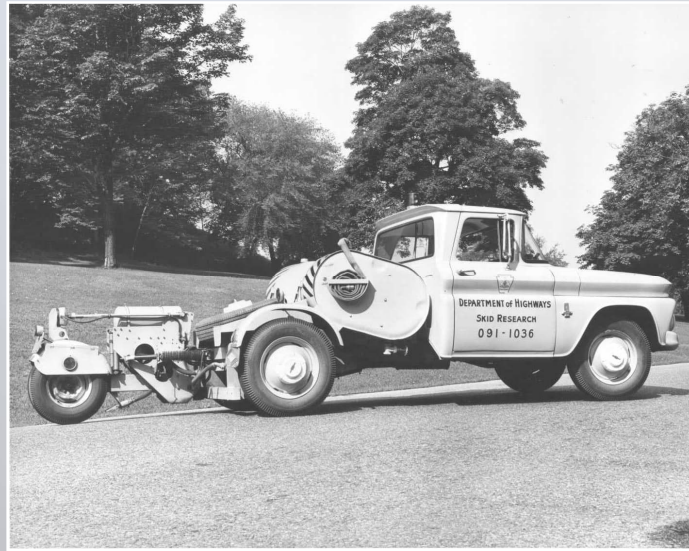
HOW ABOUT  
NOW?



# SKID FRICTION TESTING



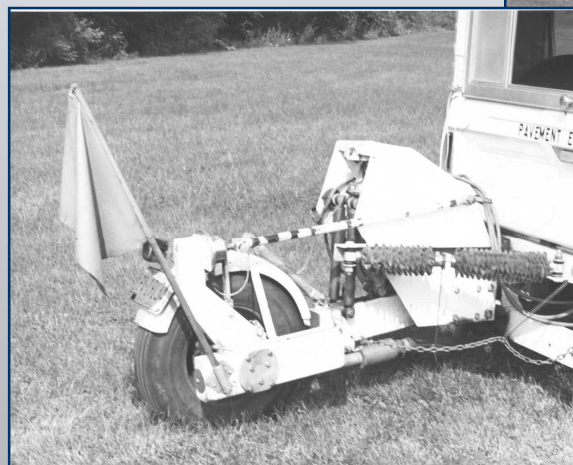
- PENNSYLVANIA STATE UNIVERSITY MODEL, CIRCA 1968



# SKID FRICTION TESTING



1950s

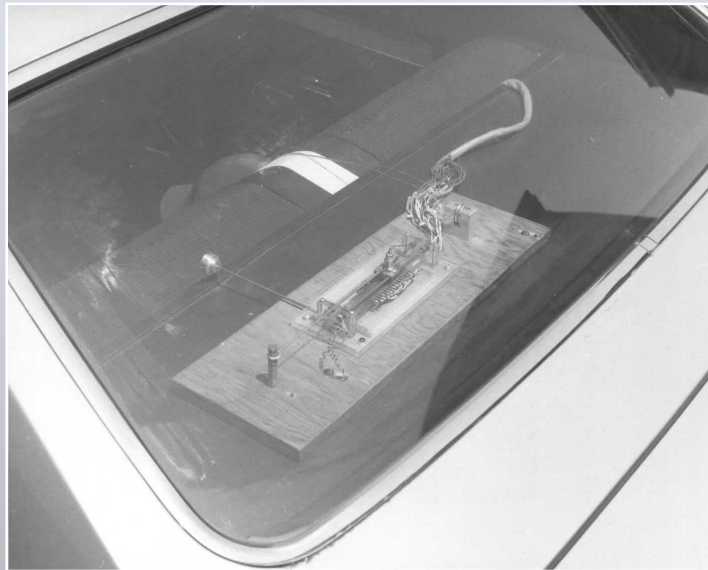


ACQUIRED IN 1970

# ROUGHNESS TESTING



- AUTOFLECT, MOUNTED INTO A 1968 CHEVELLE, WAS A RESPONSE-TYPE SYSTEM



# ROUGHNESS TESTING



- K.J. LAW MODEL, USED FROM THE LATE 1960s UNTIL THE EARLY 1980s



# ROUGHNESS INVENTORY & TESTING UNIT'S FLEET



# PENNDOT & RPUG



- PENNDOT LAST HOSTED RPUG IN OCTOBER 1993
  - HELD IN HARRISBURG, PA
  - 32 ATTENDEES
  - AGENDA INCLUDED:
    - THEORY, PAVEMENT CONDITION DATA, PROFILE MEASURING EQUIPMENT, USES OF PROFILE DATA
      - DAVE HUFT PRESENTED, "ENHANCEMENT TO ROAD PROFILERS"
      - RUDY BLANCO, LED A DISCUSSION ON "AUTOMATED MEASUREMENTS FOR FAULTING AND RAVELING DETERMINATIONS"
      - THERE WAS A PANEL DISCUSSION ON "REGIONAL CALIBRATION SITE OPERATIONS"