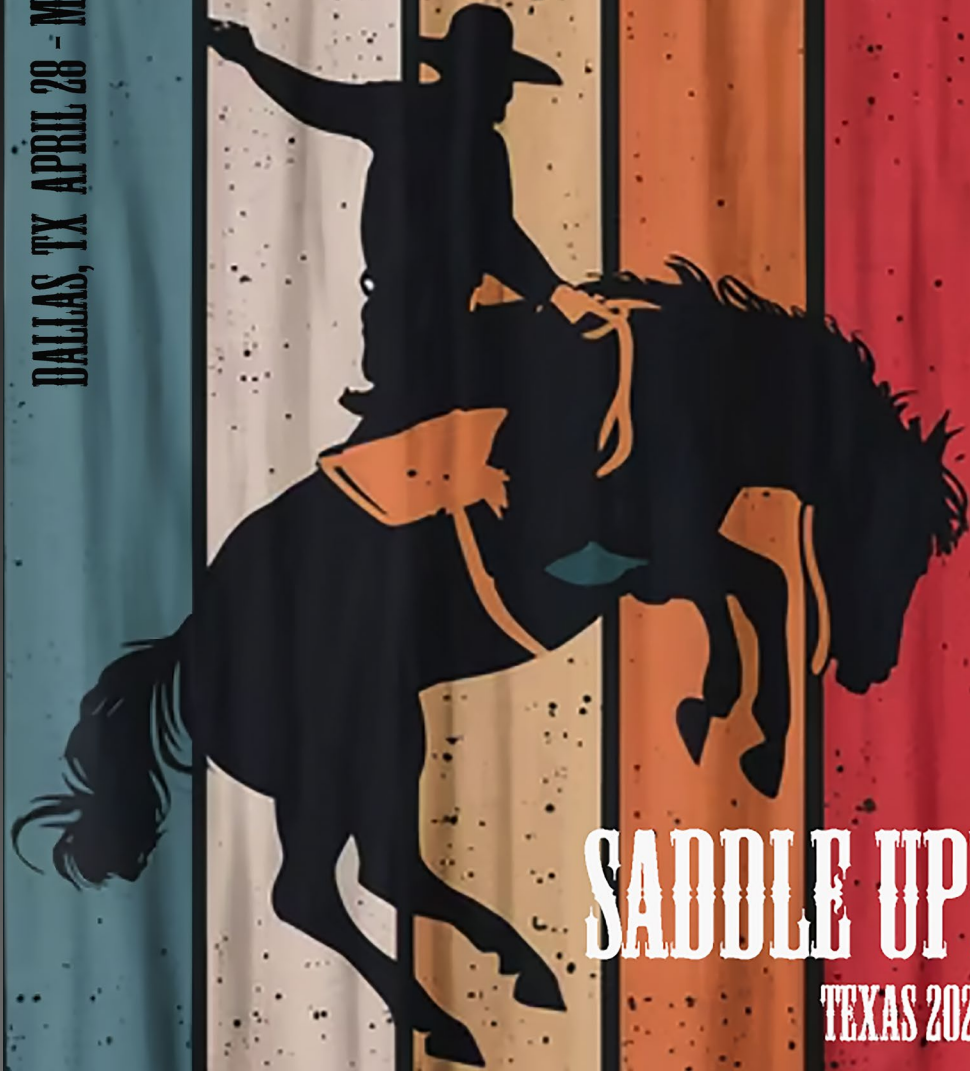


DALLAS, TX APRIL 28 - MAY 1 2025



SADDLE UP!
TEXAS 2025

TEXTURE SIGNATURE PERFORMANCE INDEX: INTEGRATING THE DATA

EVERETT SCHMITZ, PATHWAY SERVICES INC.

SR. PROJECT MANAGER



The PathRunner

Roadway Imaging

GPS Positioning

LiDAR



3D-PAS

*Single Camera/Single Laser:
Pavement Imaging,
Rutting, Faulting, Crack
Detection*

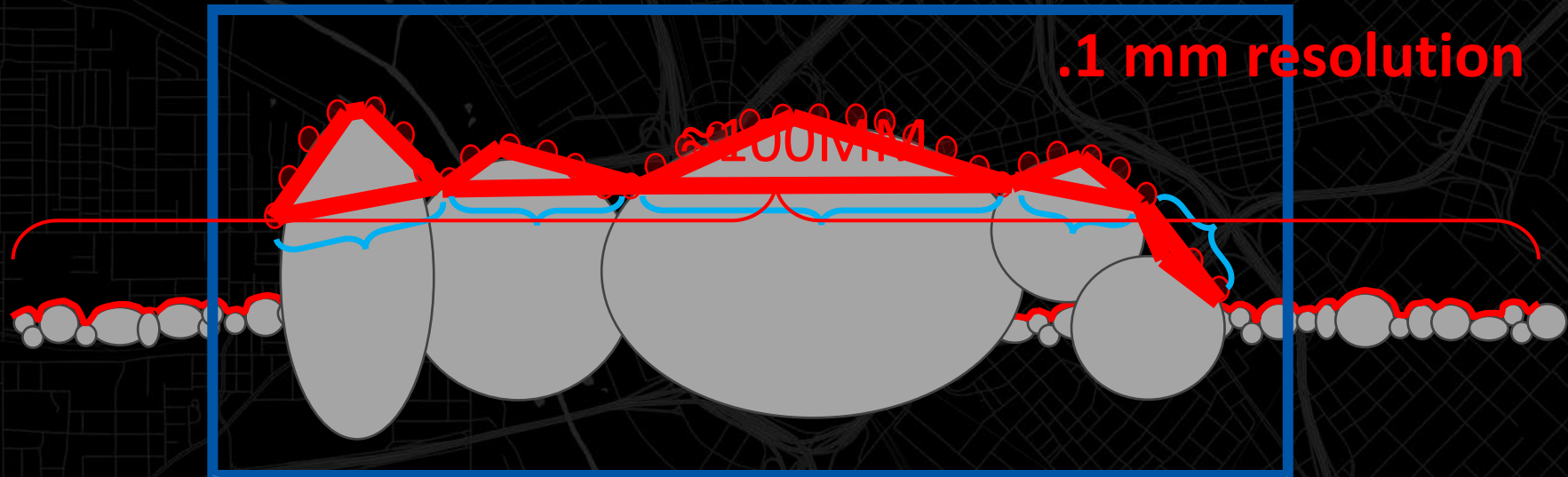
*Inertial Measurement
Pitch/Roll/RTK*

*Macrotexture
MPD/MTD/TSN/TSPI*

*Road Profiler
IRI*

Recap: Texture Signature Number

Texture Signature Number



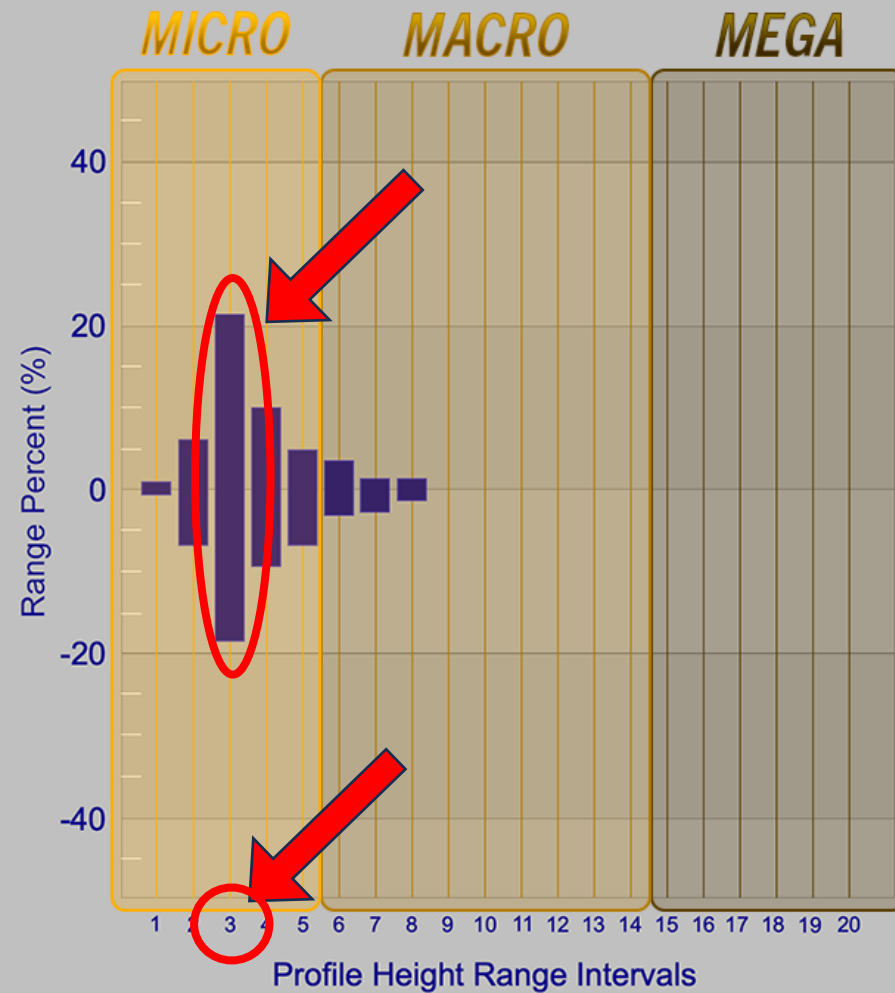
Texture Signature Number

Texture Signature

LOCATION	TEXTURE
LWP	MICRO
CENTER	MACRO
RWP	MEGA

PROFILE HEIGHT RANGES (mm)

1	0.0 - 0.1 (micro)
2	0.1 - 0.2
3	0.2 - 0.3
4	0.3 - 0.4
5	0.4 - 0.5
6	0.5 - 0.6 (macro)
7	0.6 - 0.7
8	0.7 - 0.8
9	0.8 - 0.9
10	0.9 - 1.0
11	1.0 - 2.0
12	2.0 - 3.0
13	3.0 - 4.0
14	4.0 - 5.0
15	5.0 - 6.0 (mega)
16	6.0 - 7.0
17	7.0 - 8.0
18	8.0 - 9.0
19	9.0 - 10.0
20	> 10.0



Recap: Texture Signature Performance Index

Texture Signature Performance Index: 72B

*First number describes
the *potential* pavement
function/friction capability*

*Second letter describes the
potential water
displacement capability*

Example: 84F

A pavement that is achieving moderately good friction potential, but has very poor water displacement capabilities.*

** “Friction” is being used to describe the pavement wearing course as a function. This does not replace the need to perform a friction test— rather it identifies locations that could pose a threat and need to be further evaluated.*

The background of the slide is a dark, stylized map showing a network of roads and geographical features. A prominent horizontal band of red diagonal stripes runs across the middle of the image, serving as a backdrop for the title text.

Texture Signature Performance Index: Integrating the Data

*How important is
friction?*

*71% agree it is
moderately to very
important*

More than 50% of those surveyed said they either don't/can't collect friction data or they collect it every mile or more.

DISCLAIMER: The following images and data shown are for illustration purposes only. This is not an attempt to identify cause, fault, or blame of any individual, agency, or organization.

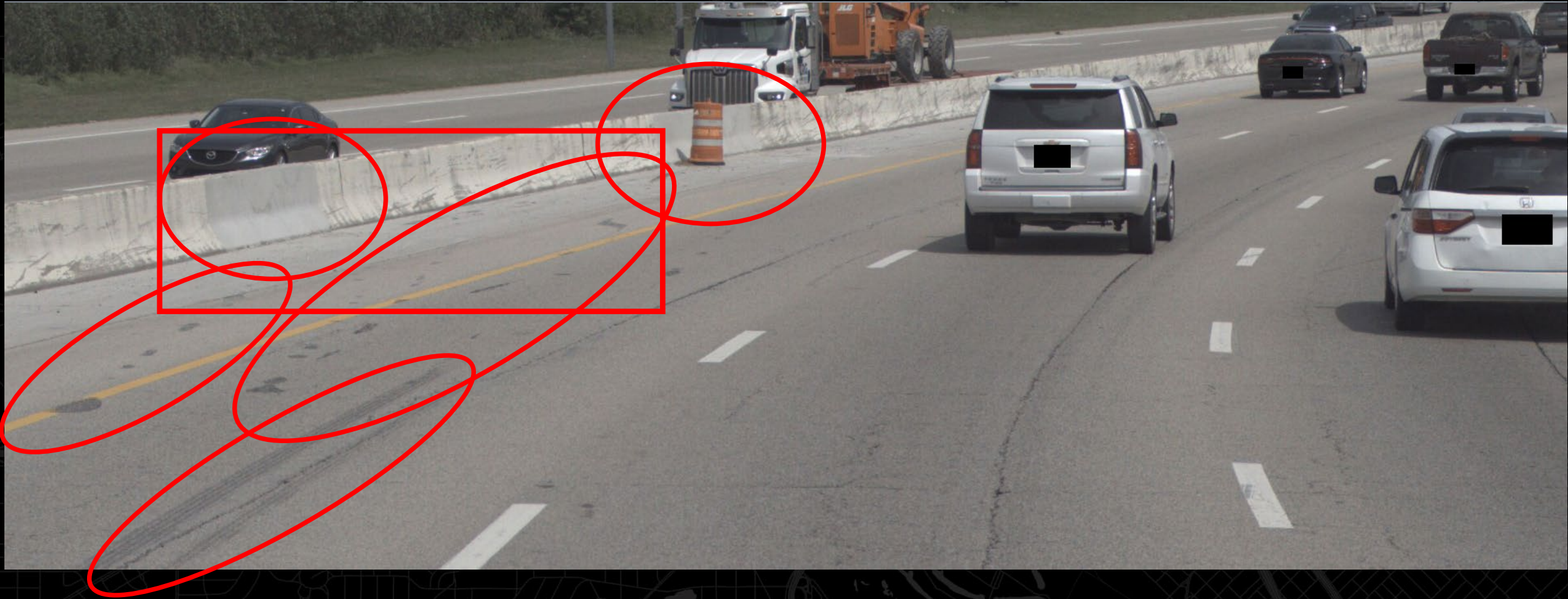
Texture Signature Performance Index



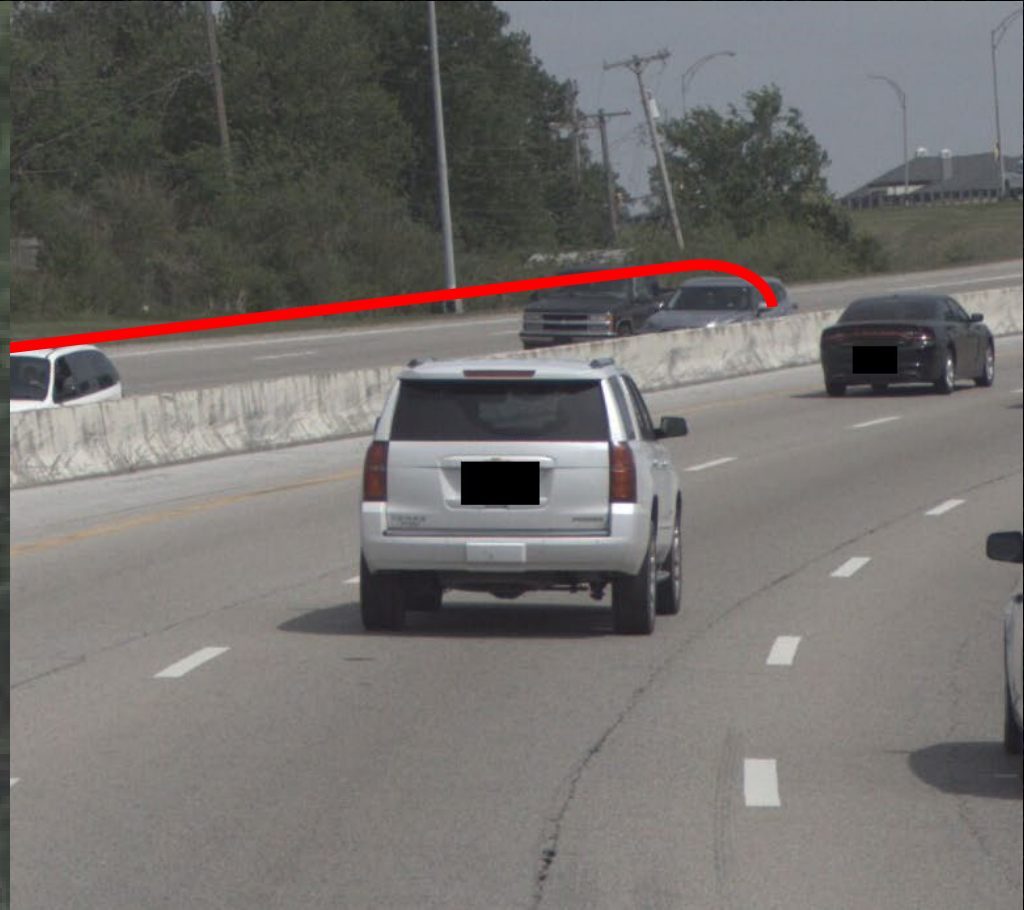
Texture Signature Performance Index



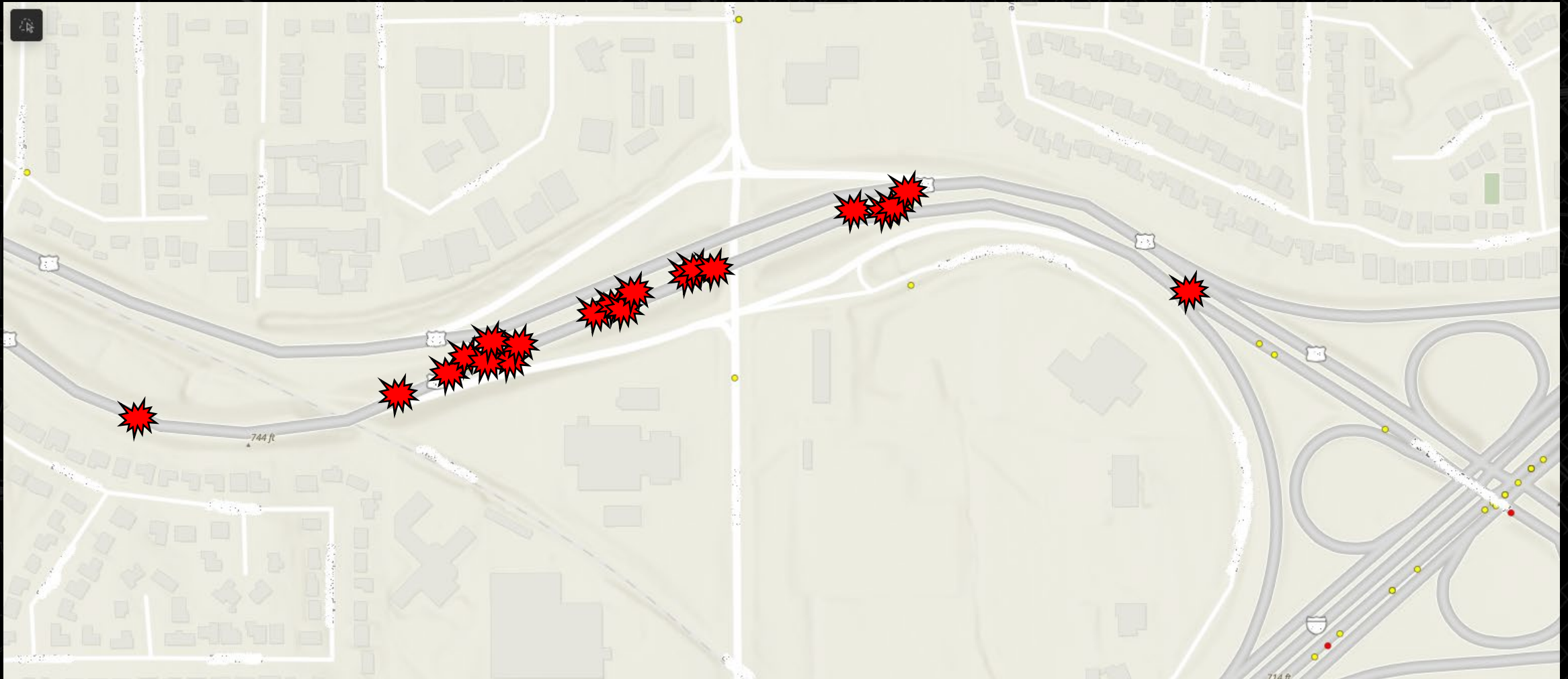
Texture Signature Performance Index



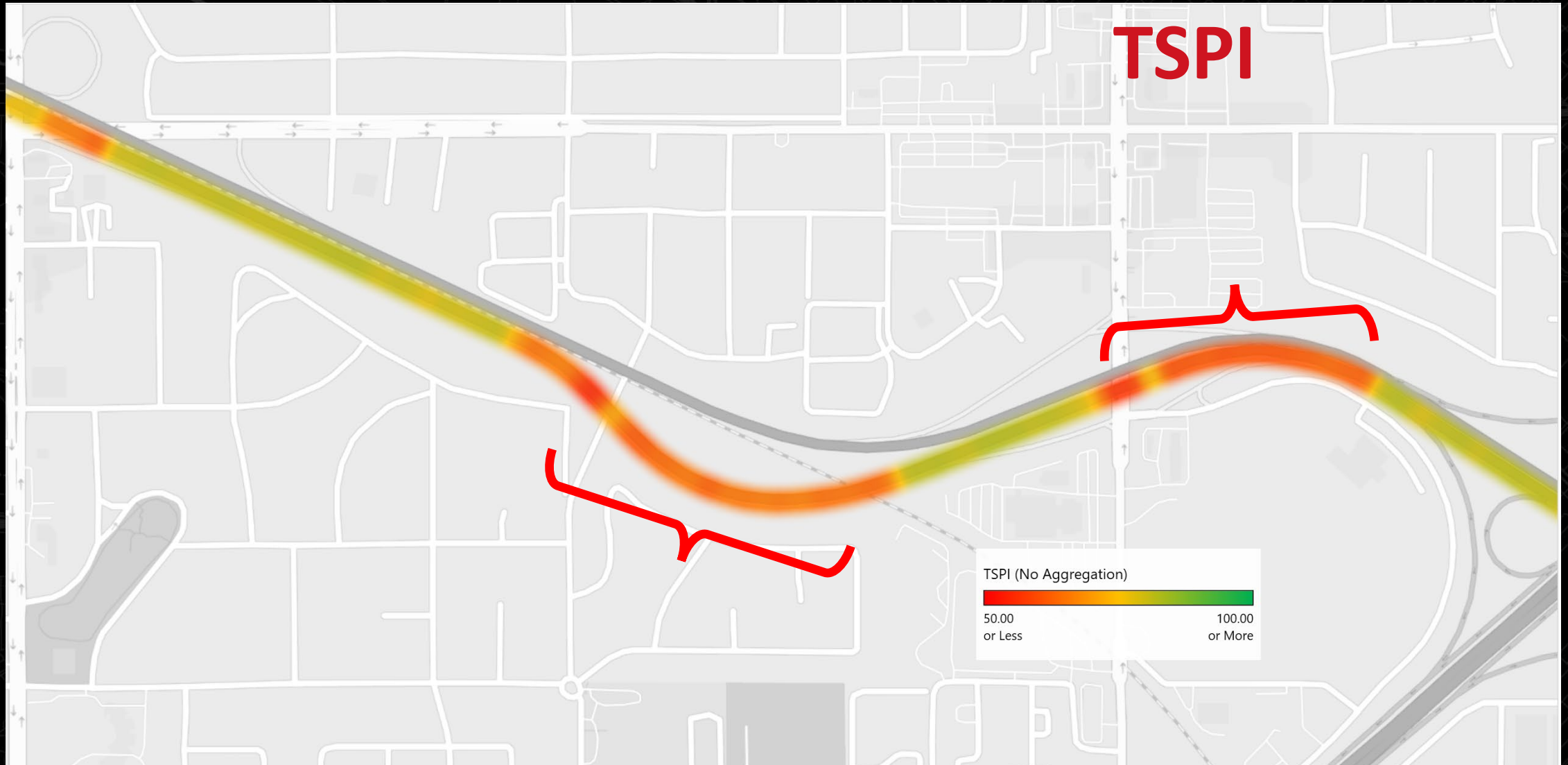
Texture Signature Performance Index



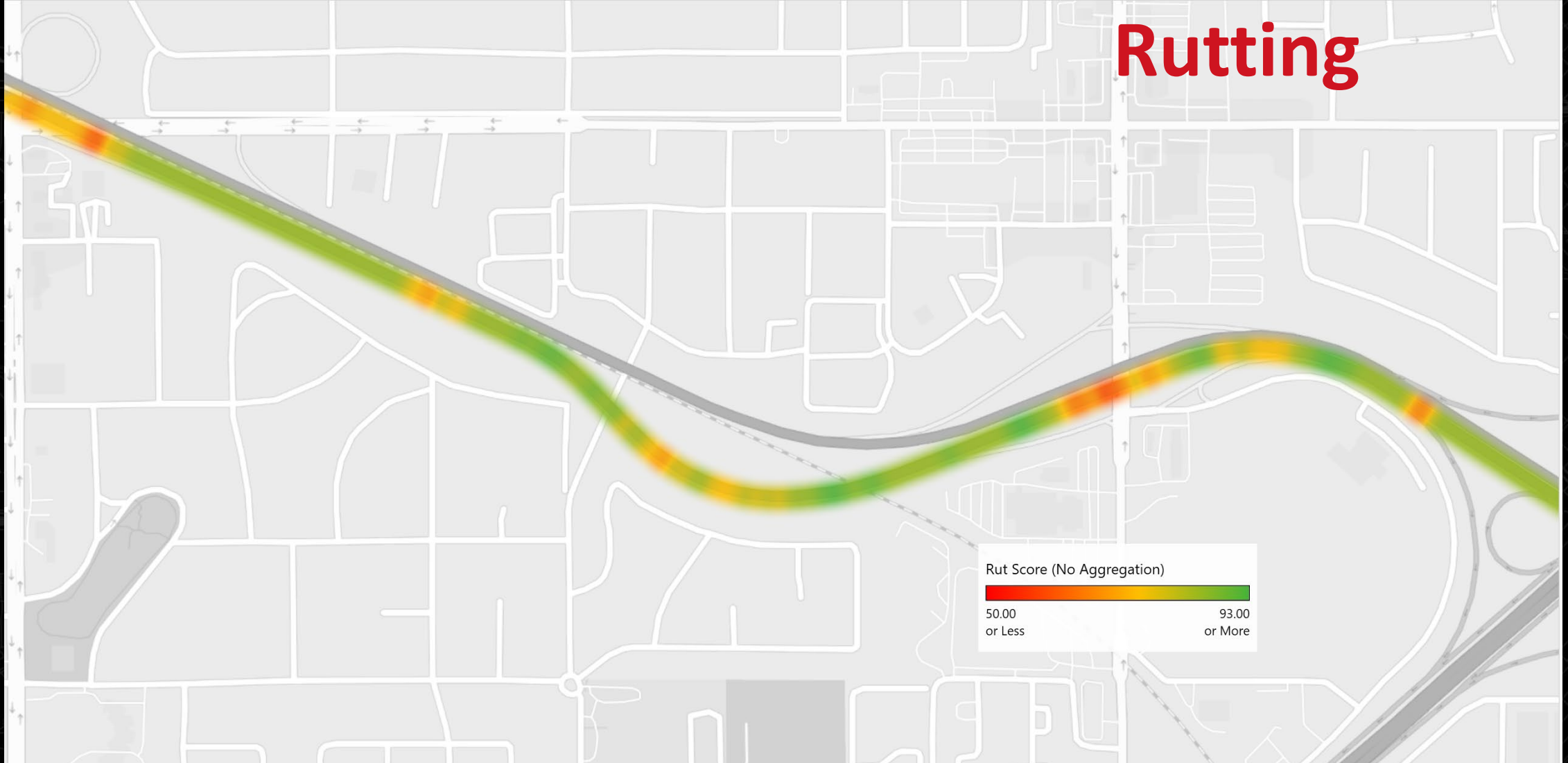
Texture Signature Performance Index



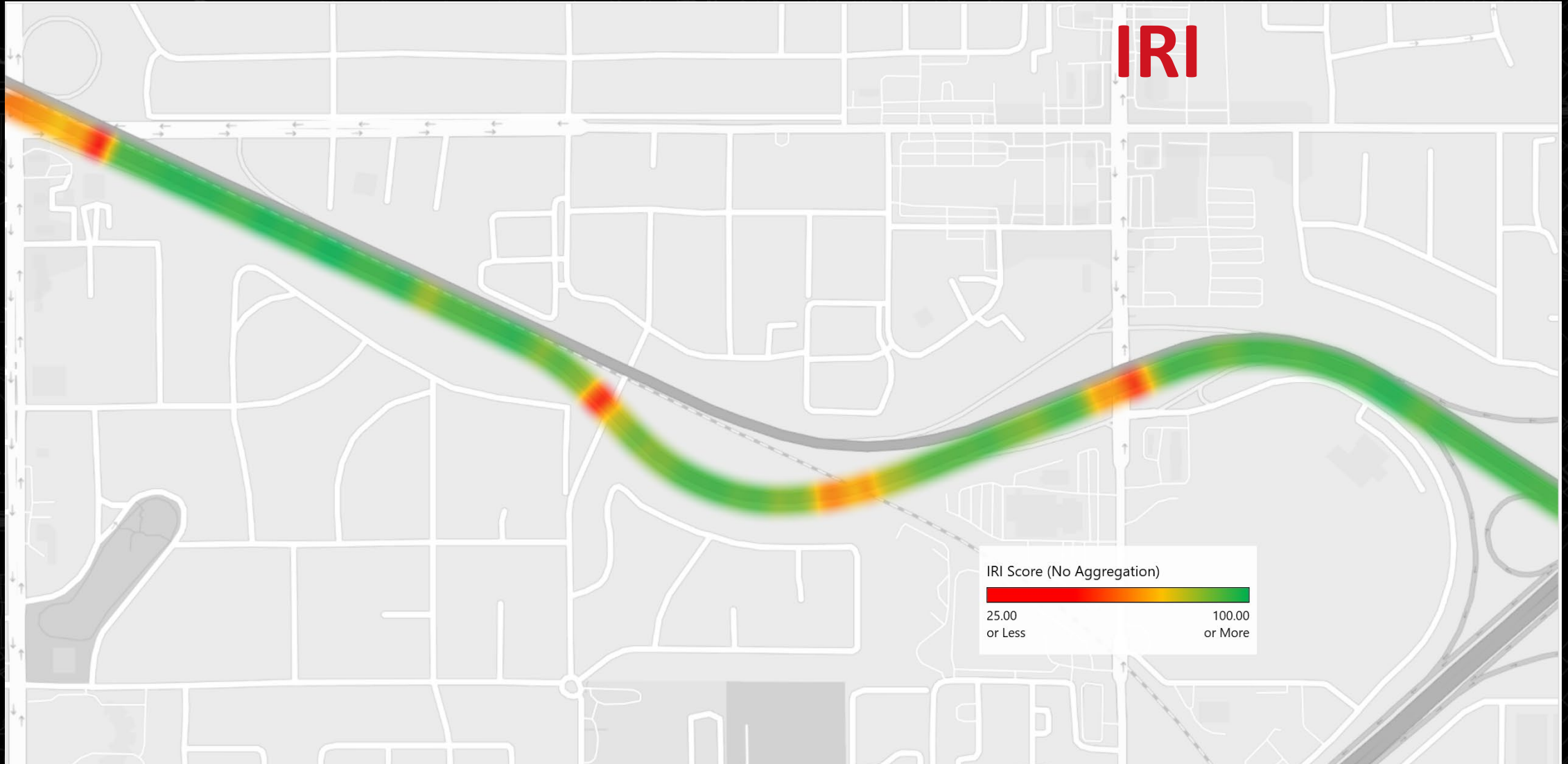
Texture Signature Performance Index



Texture Signature Performance Index

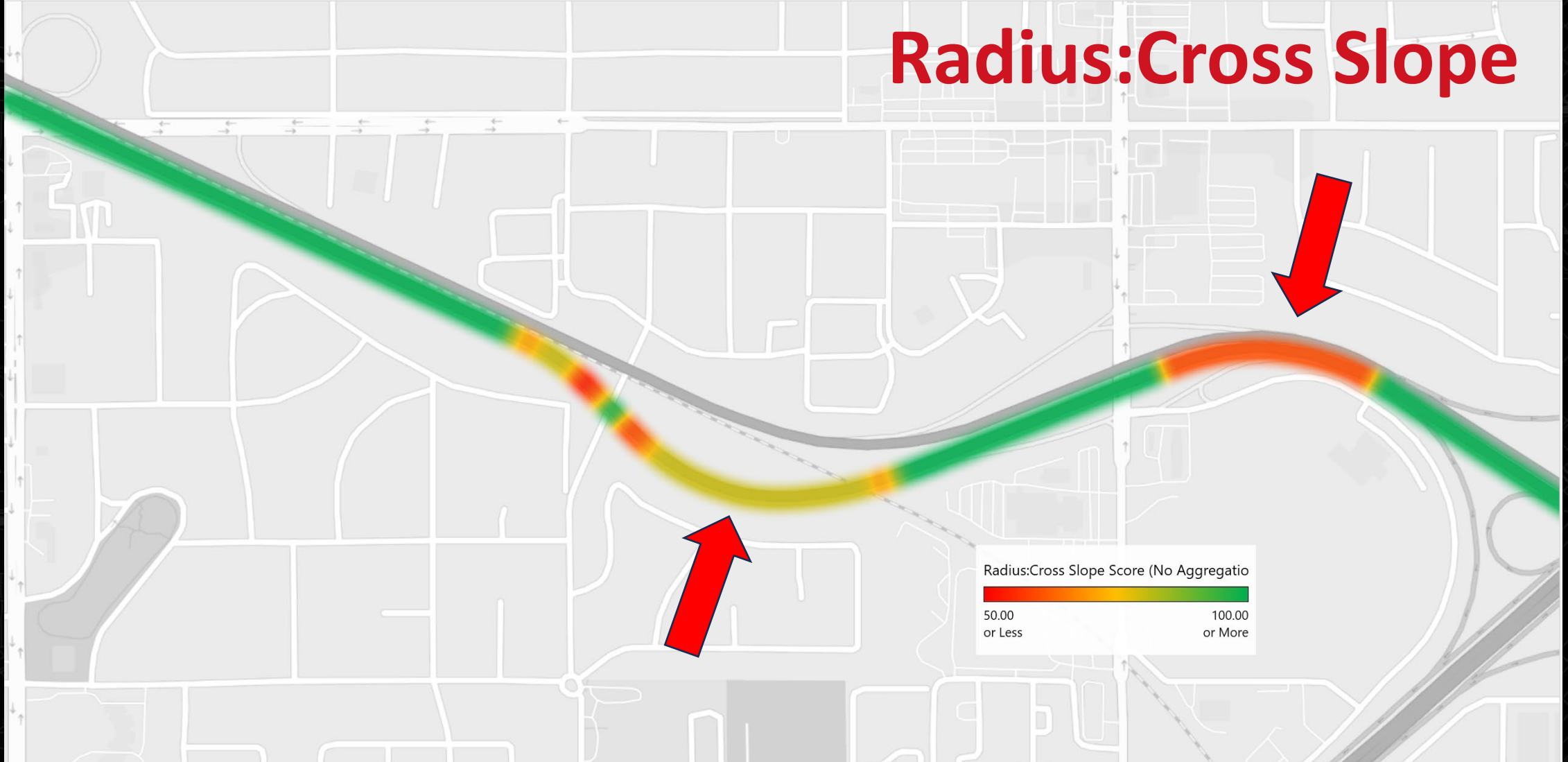


Texture Signature Performance Index

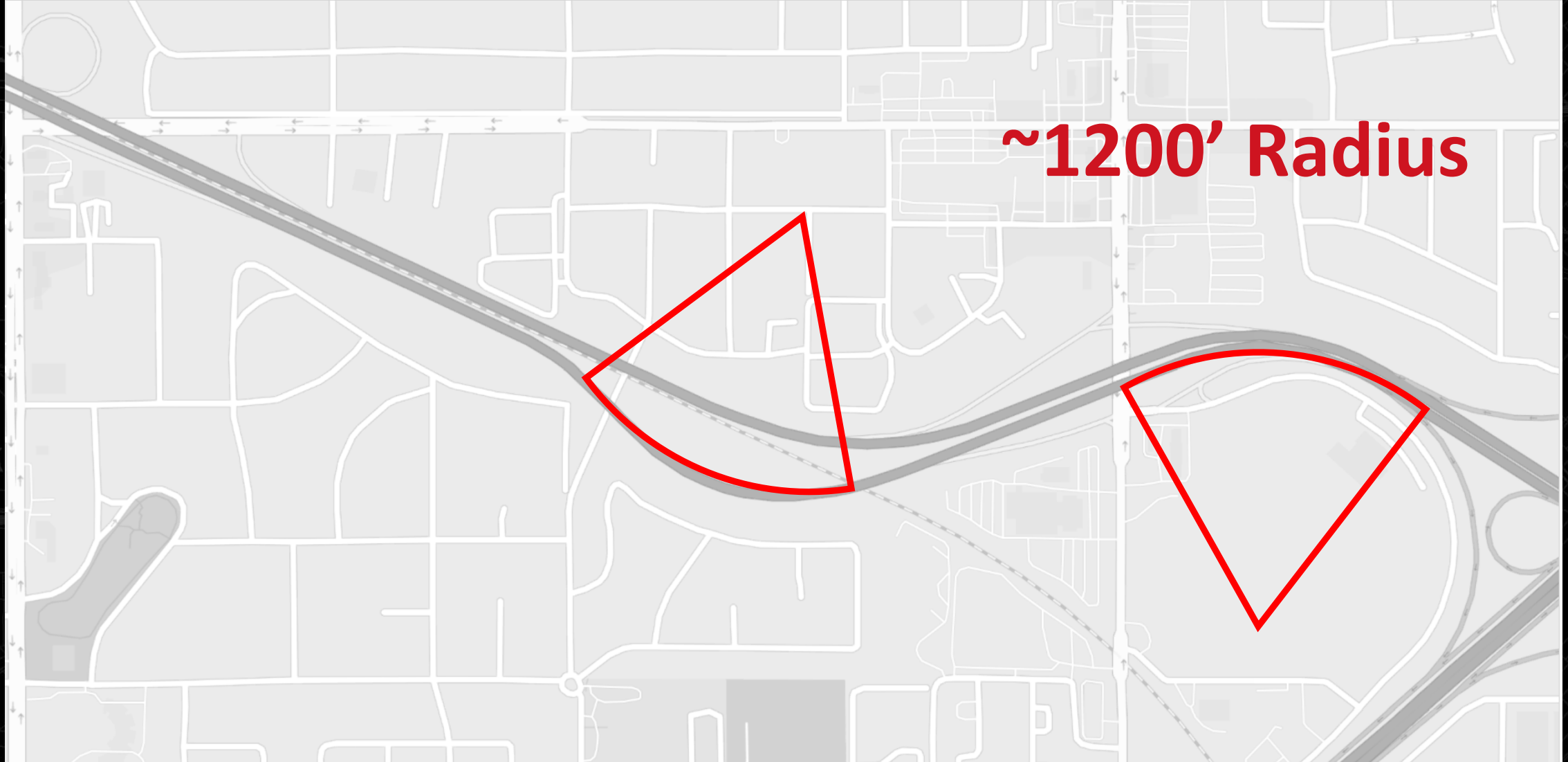


Texture Signature Performance Index

Radius:Cross Slope



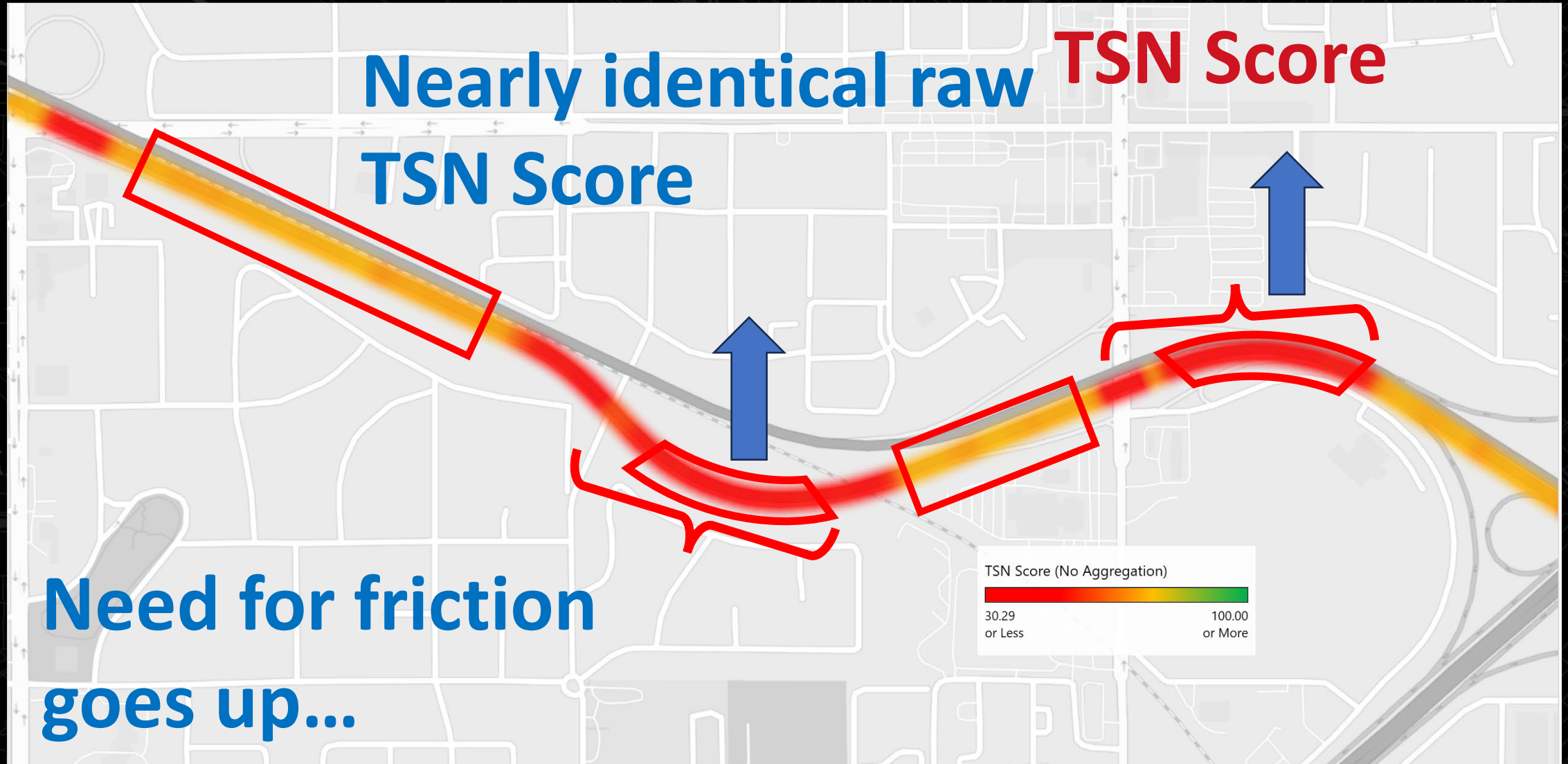
Texture Signature Performance Index



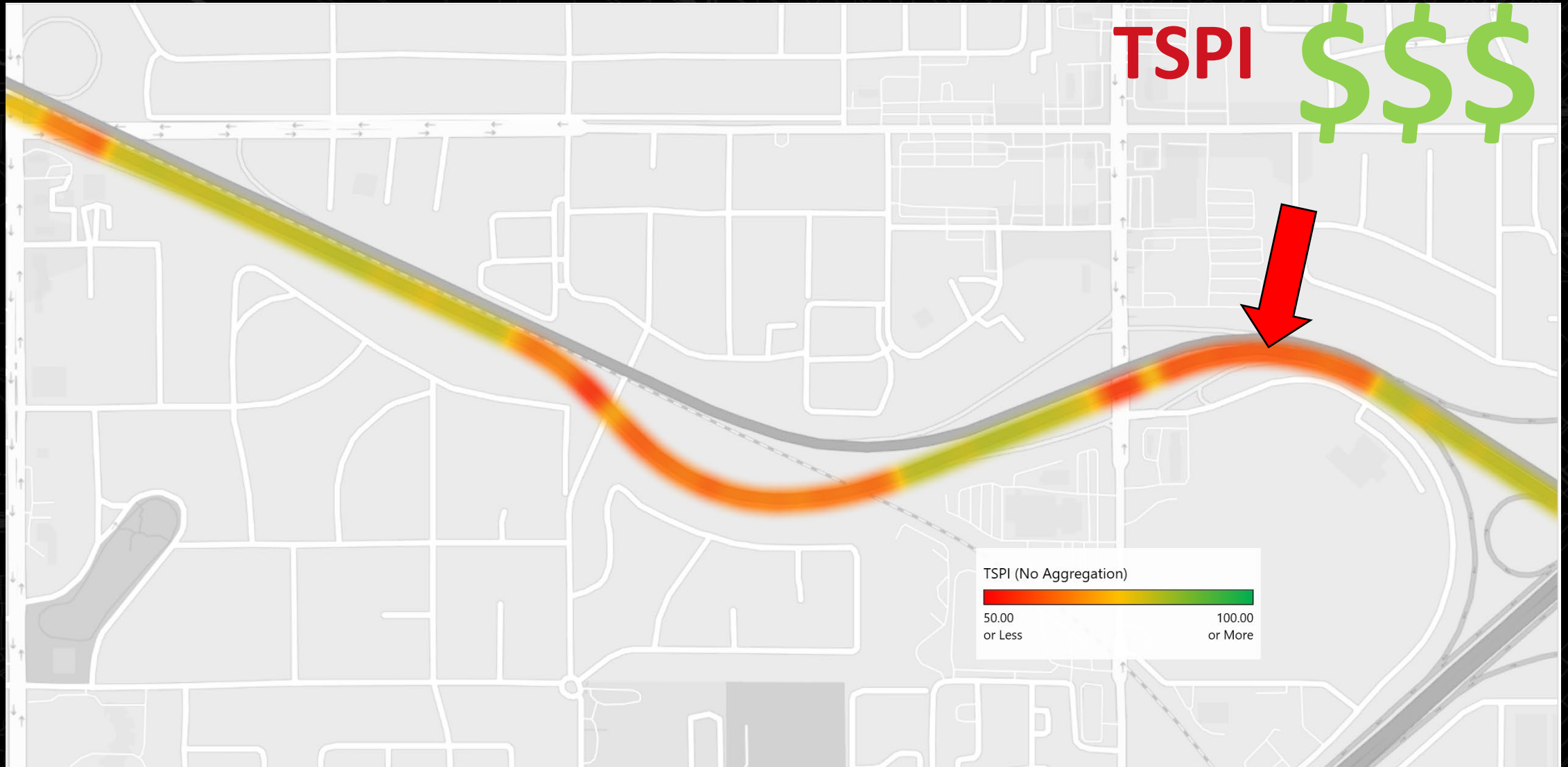
Texture Signature Performance Index



Texture Signature Performance Index

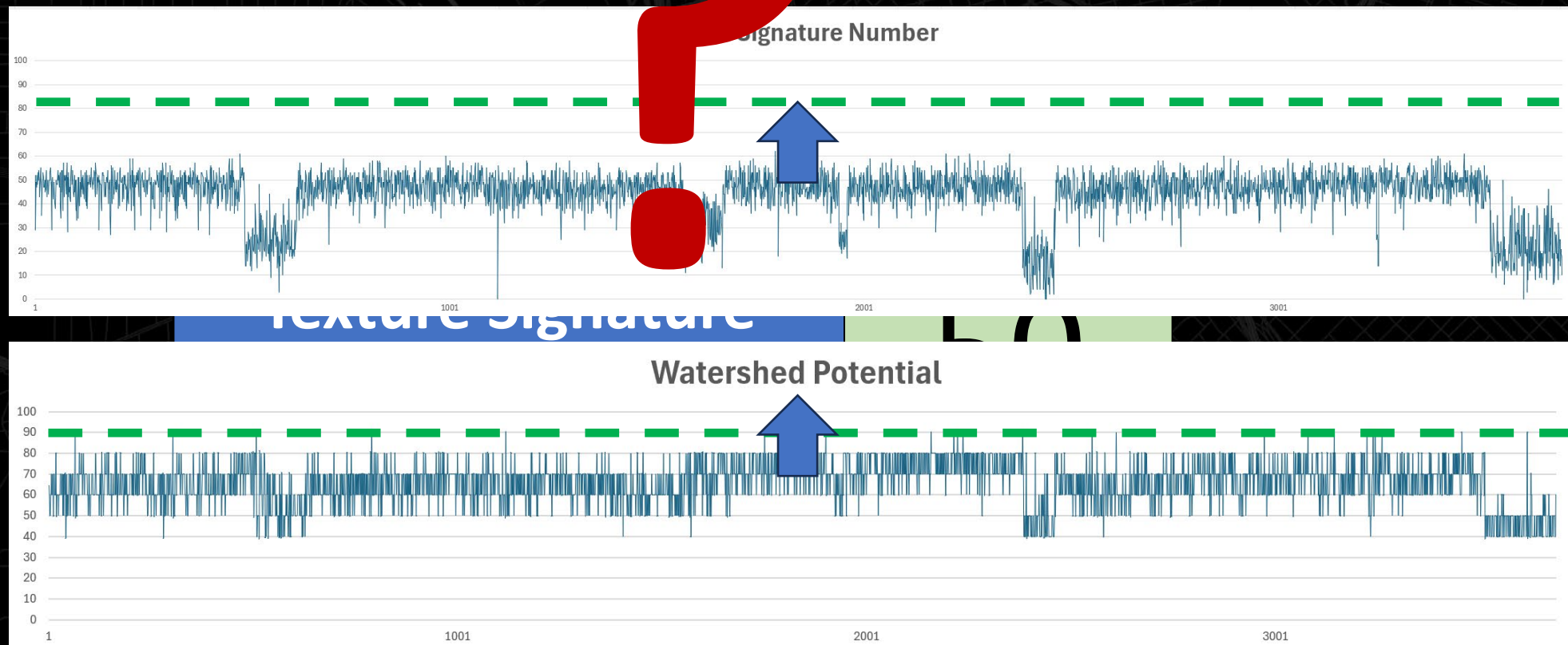


Texture Signature Performance Index



Texture Signature Performance Index

50F → 80B

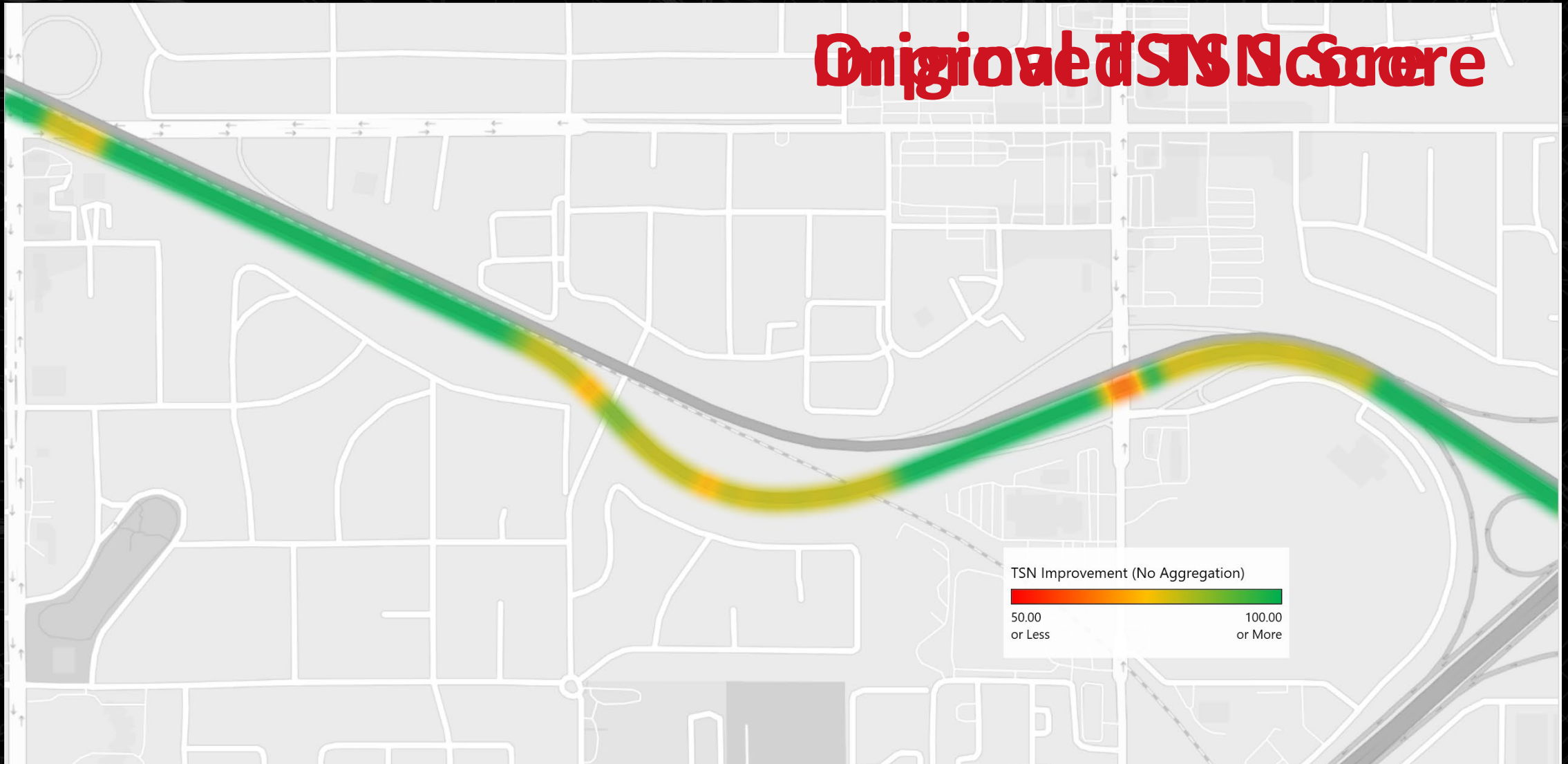


Texture Signature Performance Index

- *HSFT?*
- *Rehab?*
- *Chip seal?*
- *Reduce speed?*
- *Warning signs?*
- *???*

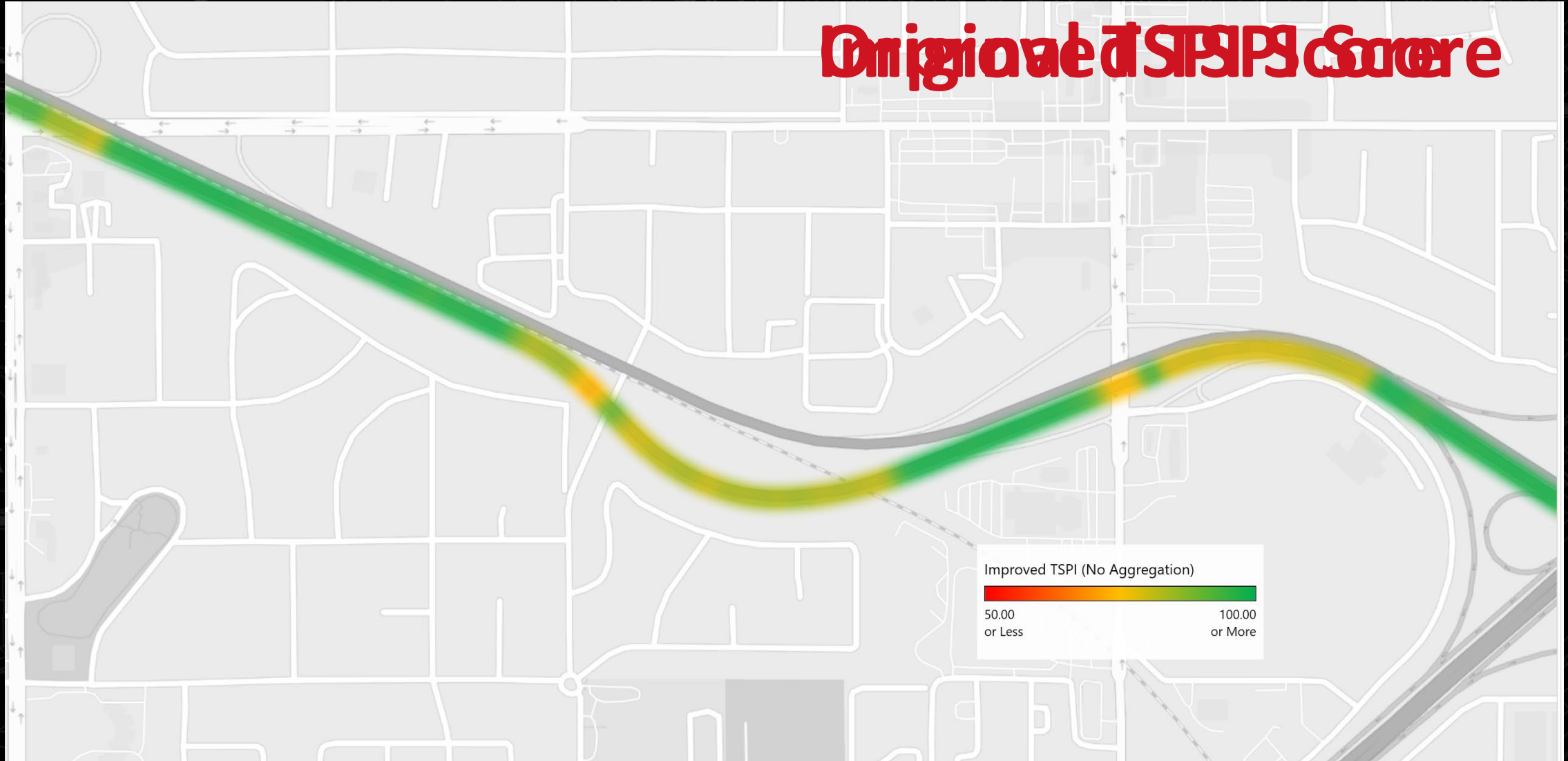
Texture Signature Performance Index

Original TSN Score

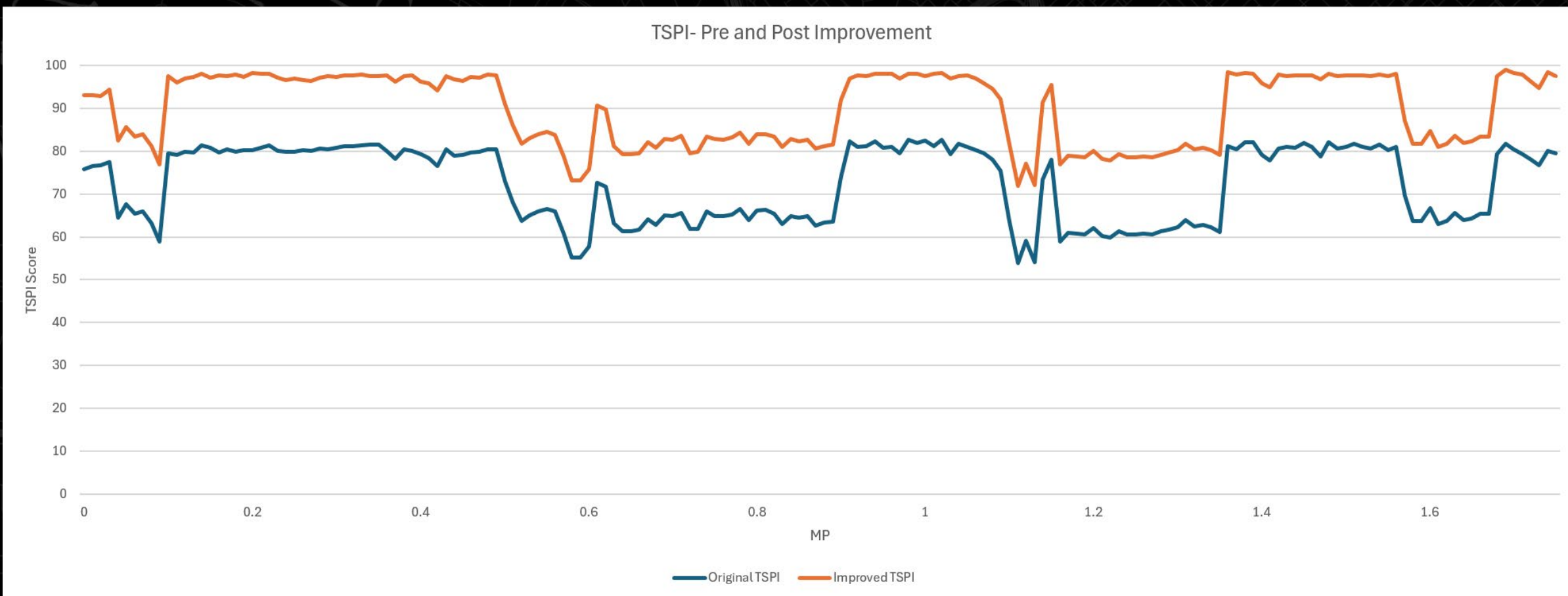


Texture Signature Performance Index

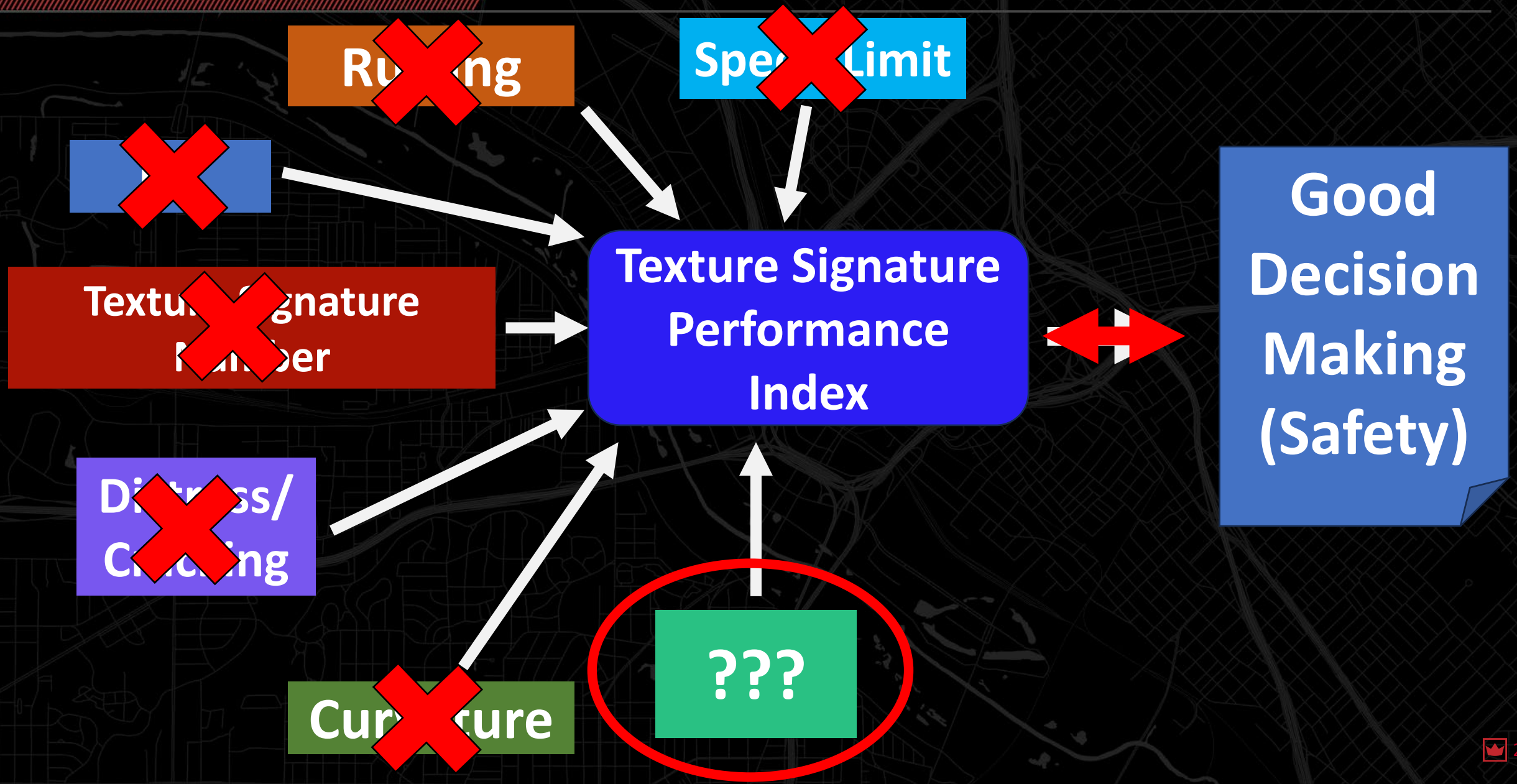
Original TSPI Score



Texture Signature Performance Index



Texture Signature Performance Index



- *Traffic count/volume*
- *Type of traffic (Commercial, heavy, etc...)*
- *Environmental (Leaves, animals, water, etc...)*
- *Lighting/Sun*
- *Speed Limit*



JUST PAID MY TAXES



**THE ROADS SHOULD BE
FIXED ANY DAY NOW**

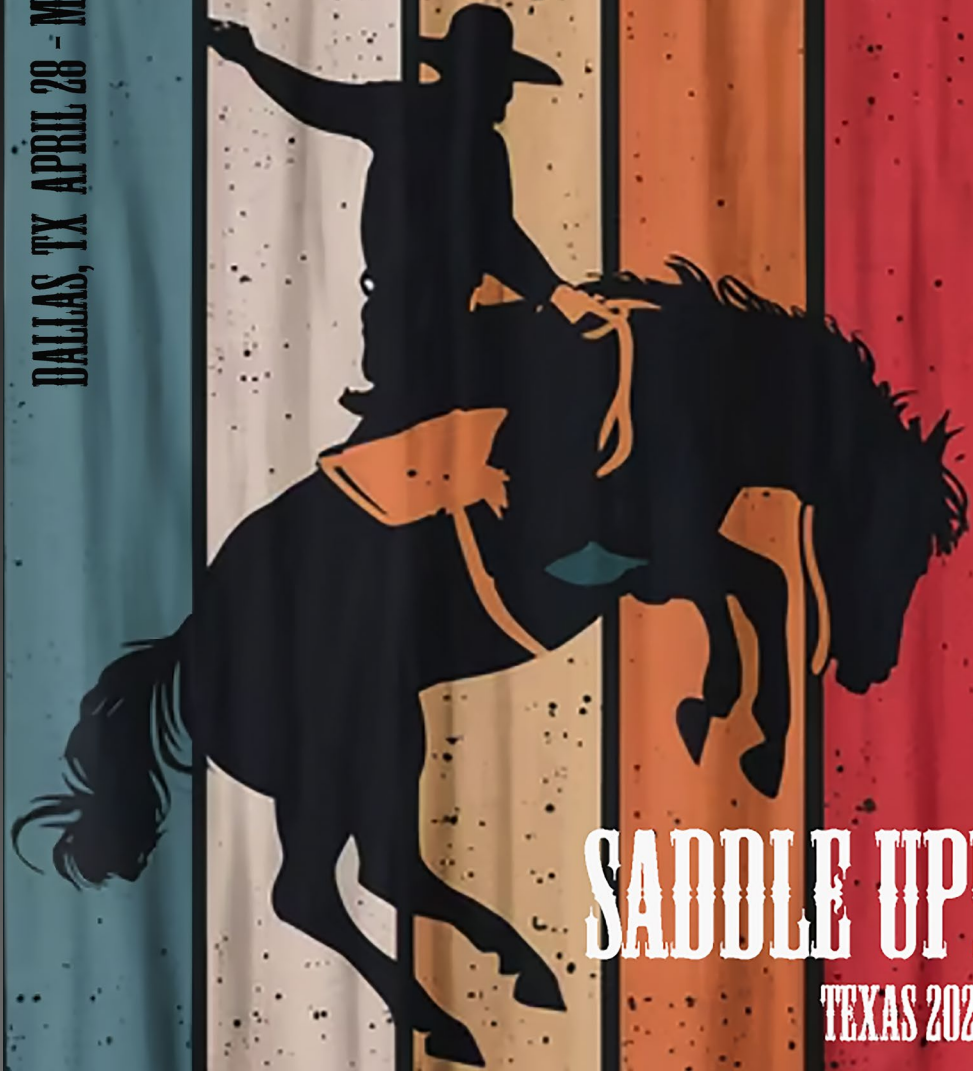
Texture Signature Performance Index

Thank you!

eschmitz@pathwayservices.com

www.pathwayservices.com

DALLAS, TX APRIL 28 - MAY 1 2025



SADDLE UP!
TEXAS 2025

TEXTURE SIGNATURE PERFORMANCE INDEX: INTEGRATING THE DATA

EVERETT SCHMITZ, PATHWAY SERVICES INC.

SR. PROJECT MANAGER

