

DALLAS, TX APRIL 28 - MAY 1 2025



RPUG
Road Profile Users' Group



SADDLE UP!

TEXAS 2025





DATES & PRESENTATIONS

MEETING THEME

The theme for the 2025 RPUG conference is: **"Saddle Up!"**

CALL FOR PRESENTATIONS

RPUG encourages you to present on the latest-&-pertinent topics for roadway and highway pavement Surface characteristics (PSC) as follows:

- 3-D Pavement Surface Measurement Technology/Certification
- Automated Pavement Distress Identification and Reporting
- Profile Data Collection Standards and Certification
- Impact of Updated Ride Specifications on Construction Practices and Incentive/Disincentive Programs
- Influence of Surface Characteristics on Rolling Resistance, Vehicle Emission, and Tire Wear
- Network Pavement Surface Measurements
- Pavement Roughness and Ride Comfort
- Pavement Surface Characteristics Data Quality Management
- Pavement Surface Texture Measurement and Analysis
- Real-time Surface Properties Measurement during Construction
- Tire-Pavement Friction/Noise Measurement and Analysis
- Updates to PSC Equipment

WHO SHOULD ATTEND?

- Equipment Operators & Vendors
- Pavement Management Engineers
- Construction & Design Engineers
- Researchers
- Federal, State & Local Gov. Agencies
- Paving Contractors
- Data Collectors
- Universities
- Equipment Manufacturers
- Consultants
- Tire Industry Professionals

The RPUG Committee is encouraging agencies/owners to submit abstracts for consideration. The committee is also targeting a balanced program of agency/owners, academia, vendors, and consultants as presenters.

Please submit a presentation abstract of 300 words or less in a 1-page MS Word document via the RPUG contact page (<https://rpug.org/contact-us/>) using "Abstract for RPUG Presentation" as the subject line by February 3rd, 2025.

*Note – Commercialism is strictly prohibited. All presentations are required to be submitted five days (April 23rd, 2025) prior to the conference and will be reviewed for such content.

IMPORTANT DATES

- December 19th, 2024 - Call for Presentation Abstracts
- February 3rd, 2025 - Deadline for submitting abstracts of presentations
- February 28th, 2025 - Notification of accepted titles/abstracts for presentations
- April 4th, 2025 - Deadline for the early-bird registration
- April 4th, 2025 - Deadline for the early-bird hotel reservation at the conference rates
- April 23rd, 2025 - Deadline for submission of presentations (including visual aids) & bios
- April 28th - May 1st, 2025 - RPUG conference



EVENT SCHEDULE

2025 APRIL 28 - MAY 1

28 MON	DISTRESS & TEXTURE POOLED FUNDS, PROVAL	
	TPF-5 (299) Distress Pooled Fund Meeting	8:00 AM -12:00 PM
	TPF-5 (463) Friction Pooled Fund Meeting	1:00 PM -5:00 PM
	ProVal Workshop	1:00 PM -5:00 PM
	Ice Breaker Event	6:00 PM -8:00 PM

29 TUE	RPUG MEETING DAY 1	
	Welcome Session & Keynotes	8:00 AM -9:00 AM
	Pavement Profile Collection & Evaluation	9:00 AM -12:00 PM
	Pavement Distress Collection & Analysis	1:00 PM -5:00 PM

30 WED	RPUG MEETING DAY 2	
	HPMS/Friction Analysis & Reporting	8:00 AM -12:00 PM
	Pavement Profile Collection & Evaluation	1:00 PM -2:00 PM
	Road Surface Characteristics	3:00 PM -5:30 PM

1 THU	TRB AKP50 & PROFILE POOLED FUND	
	TRB AKP50 Meeting	8:00 AM -10:00 AM
	TPF-5 (537) Profile Pooled Fund Meeting	10:00 AM -3:00 PM

ENTERTAINMENT OPTIONS

An entertainment activity will be planned for the event.

Details will be provided upon arrival to RPUG.





HOTEL & MEETING LOCATION

HOTEL INFORMATION

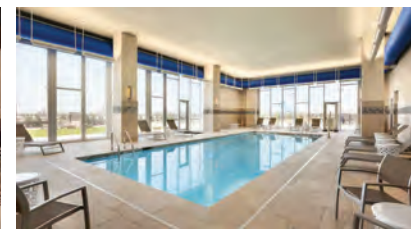
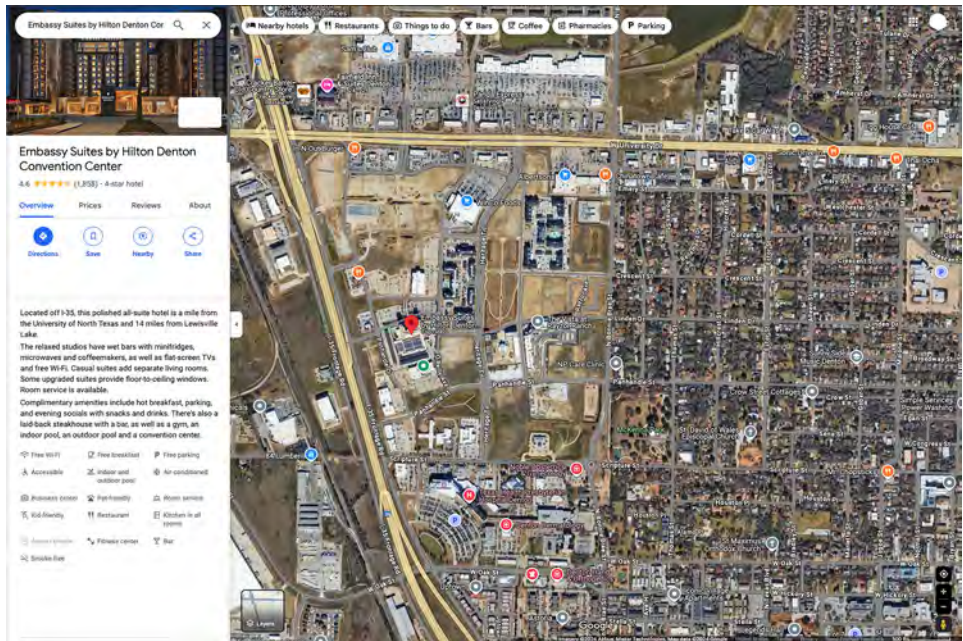
The 2025 meeting will be hosted at the Embassy Suite Convention Center Hotel in Denton, TX, from April 28th to May 1st, 2025

Address:

Embassy Suites by Hilton Denton
Convention Center
3100 Town Center Trail
Denton, TX 76201
Phone: 940-243-3799

Hotel reservations can be made for a discounted rate using group code "RPUG" no later than April 4, 2025. You can either click here to register online or call the number above and ask for the RPUG group rate.

The hotel and conference center are also located within walking distance of several local restaurants.





SPONSORSHIP OPPORTUNITIES

Opportunities exist for industry members to underwrite important activities at our annual meeting. It is vital to recognize industry support in the following ways:



Contribution Amount
\$3500

- Identified in meeting packet & power point presentation played at meeting
- Logo posted on RPUG web page
- Sign prominently displayed at meeting
- Web page recognizing company with description of company products / services and a link to your company website
- Three free registrations



Contribution Amount
\$2500

- Identified in meeting packet & power point presentation played at meeting
- Logo posted on RPUG web page
- Sign prominently displayed at meeting
- Two free registrations



Contribution Amount
\$1500

- Identified in meeting packet & power point presentation played at meeting
- Logo posted on RPUG web page
- Sign prominently displayed at meeting
- One free registration

For further information regarding RPUG sponsorship, please contact Ms. Patte Hahn at the National Center for Pavement Preservation at 517-432-8220 or by email at hahn@egr.msu.edu



REGISTRATION

REGISTER BEFORE APRIL 4, 2025



Online: <https://www.pavementpreservation.org/register/>

Mail: (with payment) National Center for Pavement Preservation, 2857 Jolly Rd. Okemos, MI 48864

Name _____

Title _____

Organization _____

Street Address _____

City/State/ZIP _____

Work Phone _____ Email _____

INDUSTRY REGISTRATION:

ATTENDEE REGISTRATION

RPUG Registration (no later than March 30, 2025).....\$475

RPUG Late Registration (after March 30, 2025)..... \$500

Spouse/Guest Pass (All Meals/Events)..... \$325

EXHIBITOR REGISTRATION

Exhibitor Registrations (includes 2 participants and booth space).....\$2250

Additional Industry Attendee who's registration is covered either as being second exhibitor or covered by a sponsorship.....\$ 0

SPONSOR REGISTRATION

SILVER SPONSORSHIP OF RPUG 2025 (includes 1 participant).....\$1500

GOLD SPONSORSHIP OF RPUG 2025 (includes 2 participants).....\$2500

PLATINUM SPONSORSHIP OF RPUG 2025 (includes 3 participants)..\$3500

Total Due: \$

PAYMENT INFORMATION *(please select one):*

Check, Payable to "Michigan State University" and mailed with registration

Credit Card (Complete Information Below):

CREDIT CARD NUMBER

EXPIRATION DATE SECURITY CODE PHONE NUMBER

NAME ON CARD

EMAIL FOR RECEIPT

CARDHOLDER STREET ADDRESS

CARDHOLDER CITY/STATE/ZIP