



**RPUG**  
Road Profile Users' Group

**2024**  
April 29 - May 2

# Welcome Note

**ST. AUGUSTINE**  
FLORIDA

# Some Florida Quick Facts





# *Typical Floridian Accent*

*If you speak with an accent  
not always easy to  
understand like Grandpa's,  
you must be from Florida*



# Florida Quick Facts

- **Florida = Land of flowers**
- **Discovered by Juan Ponce de Leon in 1513.**
- **1<sup>st</sup> permanent European settlement established in 1565 in St. Augustine by Spain.**
- **Became a U.S. Territory in 1821**
- **Admitted to United States as a State on March 3, 1845 (27th State)**



# Florida Quick Facts (Con't)

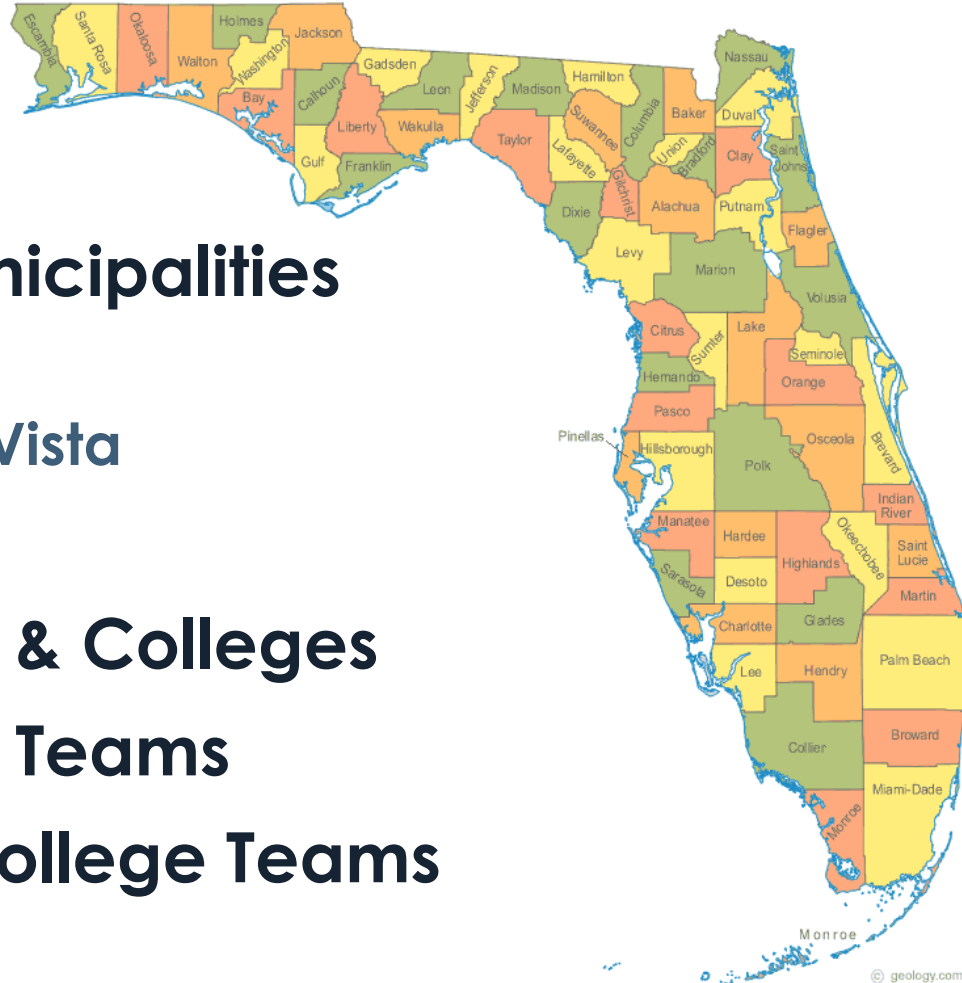
- **Capital: Tallahassee**
- **Nickname: Sunshine State**
- **Total Area - 58,560 Sq. Miles**
  - Land Area - 54,252 Sq. Miles
  - Total Water Area - 4,308 Sq. Miles
- **Average Annual Temperatures:**
  - Summer: 80.5° F (26.9° C) (North) & 82.7° F (28.2° C) (South)
  - Winter: 53.0° F (11.7° C) (North) & 68.5° F (20.3° C) (South)

# Florida Quick Facts (Con't)

- **4<sup>th</sup> largest economy with \$1.4 trillion gross state product and 16<sup>th</sup> world largest as 2022**
- **2023 Population: 22,610,726**
  - 2nd most populous state
  - 20.3% increase since 2010
  - 21.6% of population is 65 years & over
- **2021 Vehicle Registrations: 7,853,979**
- **Mean travel time to work: 27.9 minutes**
- **Annual Visitors (2022): 137.6 million**
  - 13% increase from 2021 and 5% from a pre-pandemic 2019.
  - In 2022 more than 74 million visited Orlando (25% increase from 2021), Ranking as the No. 1 U.S. Travel Destination.

# Florida Quick Facts (Con't)

- **67 Counties**
- **410 Incorporated Municipalities**
  - Largest: Jacksonville
  - Smallest: Lake Buena Vista
- **12 Public Universities**
- **29 Private Universities & Colleges**
- **11 Professional Sports Teams**
- **13 NCAA Division 1 College Teams**





# Quick Facts About St. Augustine

- **Founded by Pedro Menéndez de Avilés in 1565**
- **Located on a peninsula between 2 saltwater rivers, San Sebastian and Matanzas**
- **Named after St. Augustine**
  - Bishop from North Africa
  - Viewed as one of the most important Church Fathers of the Latin Church
- **Home of the Oldest Wooden Schoolhouse**
- **Home to the Oldest Masonry Fort**
- **Home of the Oldest Wax Museum**
- **Has the Narrowest Street in the US**
- **Its Light Tower is rumored to be haunted**





# ***CONTEXT & QUICK FACTS ON TRANSPORTATION INFRASTRUCTURE***

- **Transportation Infrastructure is essential to:**
  - ✓ People,
  - ✓ Businesses,
  - ✓ Nation's economy, defense, and mobility,
  - ✓ Healthy communities.

# Quick Facts on Florida Transportation



# State Road Department



- **1915 – State Road Dept first authorized by the Florida Legislature**
- **1916 - First budget ever authorized**
  - \$9,775 for a six month period
  - Requested additional \$400 for lab equipment and supplies

# General Purpose of State Road Department

**“Supply hard-surfaced rural roads to join cities, counties, towns and villages”**





# Justification for the Lab

**“The laboratory, I believe, is essential to the full usefulness of the Department as we are daily asked to pass upon road building materials and without the laboratory equipment any opinion we may venture to give is purely guess work”**



**William F. Cocke  
State Road Commissioner  
(Chief Engineer)  
October, 1916**

# Department of Transportation

- **1969 – Designated Florida Department of Transportation**
- **1987 – Florida Transportation Commission formed**

## **Mission**

The department will provide a safe transportation system that ensures the mobility of people and goods, enhances economic prosperity and preserves the quality of our environment and communities

## **Vision**

Serving the people of Florida by delivering a transportation system that is fatality and congestion free

# Florida's Transportation System

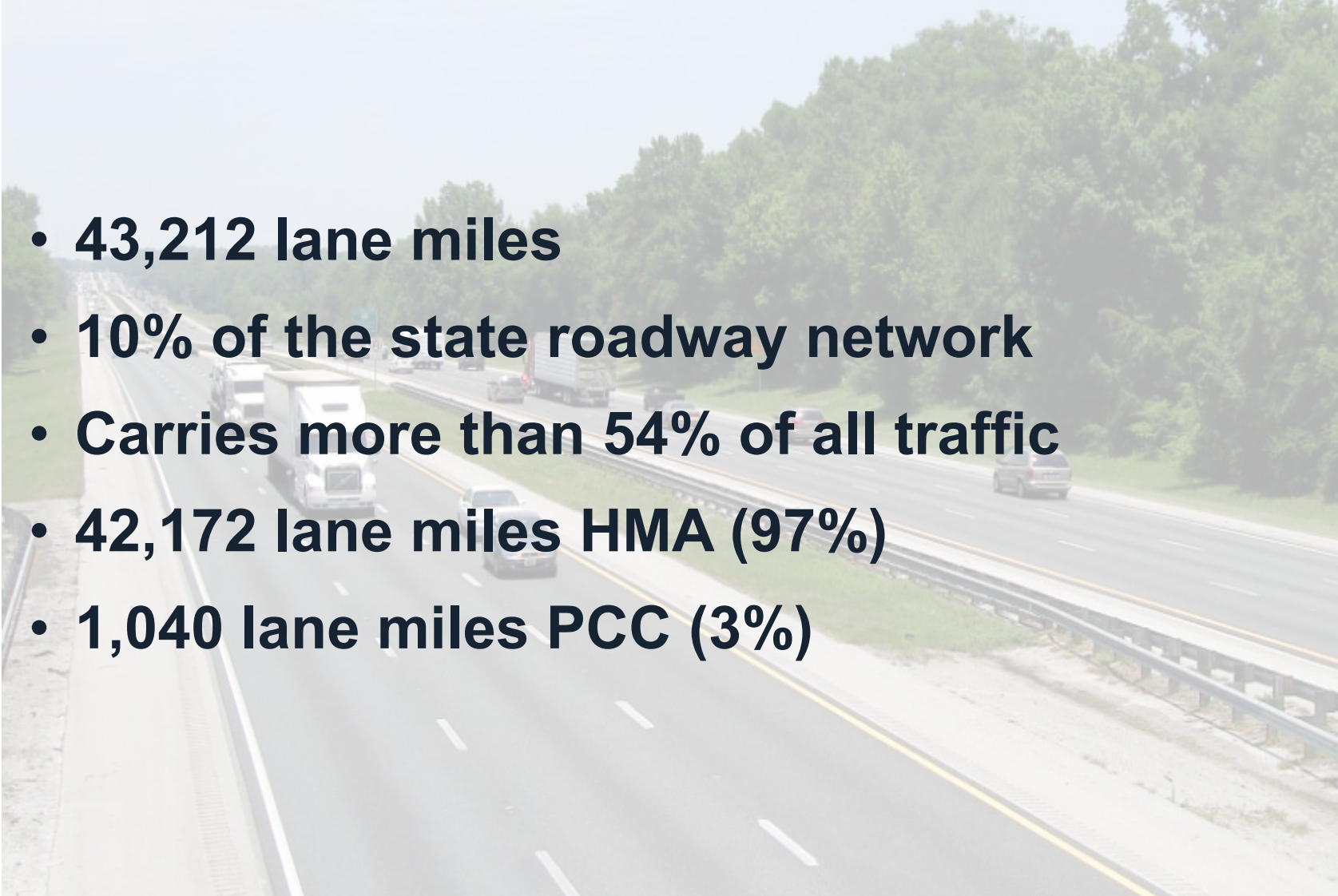
- **780 Airports**
  - **129 public use**
    - **19 Commercial**
    - **110 general aviation**
  - **651 private use**
- **2753 Railway Miles**
  - **143 miles state owned**
- **15 Deepwater Seaports**
- **29 Transit Systems**
- **1 Commuter Rail System**
- **2 Spaceports**
  - **5 Active launch facilities**





# Florida's Highways (FDOT Maintained)

- 43,212 lane miles
- 10% of the state roadway network
- Carries more than 54% of all traffic
- 42,172 lane miles HMA (97%)
- 1,040 lane miles PCC (3%)





# State Highway System Condition

- **Per Florida Statute, at least 80% of the pavements on the state highway system must meet Department Performance Standards**
  - Rating on a scale of 0 -10.
  - Flexible rated for rutting, cracking, and ride.
  - Rigid rated on defect and ride.
  - Segments with rating  $\leq 6.4$  classified as deficient.

# ***QUICK FACTS US TRANSPORTATION INFRASTRUCTURE***

- Some statistics, from the *2022 USDOT Transportation Statistics Annual Report*:
  - ✓ Connects 7.9M businesses with customers, suppliers, and workers.
  - ✓ Served 327M residents and 80M visitors.
  - ✓ Transportation assets valued at about \$8.3 trillion
    - *Public highways & streets accounted for ~ 45% or \$3.7 trillion*
    - *Other publicly owned transportation, such as airports, seaports, and transit structures, accounted for \$861 billion.*

# ***QUICK FACTS (con't)***

- The National Highway System consists of about 4.2 million center-line or 8.8 million lane-miles and more than 617K bridges.
- Close to 70% of the roadways are Local roads.
- About 1% of total system-miles are highways handling more than ¼ of total traffic volumes.
- In 2019, the federal, state, and local governments spent about \$3.6 billion on highways.
- In 2021, ASCE reported that poor road condition results in \$130 billion added vehicle repairs and operating costs per year .
- 273.6 million motor vehicles drove a total of more than 3.2 trillion miles.

## ***SUPPLEMENTARY FACT***

Since the implementation of performance measures through *MAP-21* and the *Fast Act*, states are held accountable for the condition of their transportation infrastructure.





**Patte Hahn's**  
*Secrets of*  
*Happy Life*

# Go and have fun in the meadows...



# Avoid bad habits...





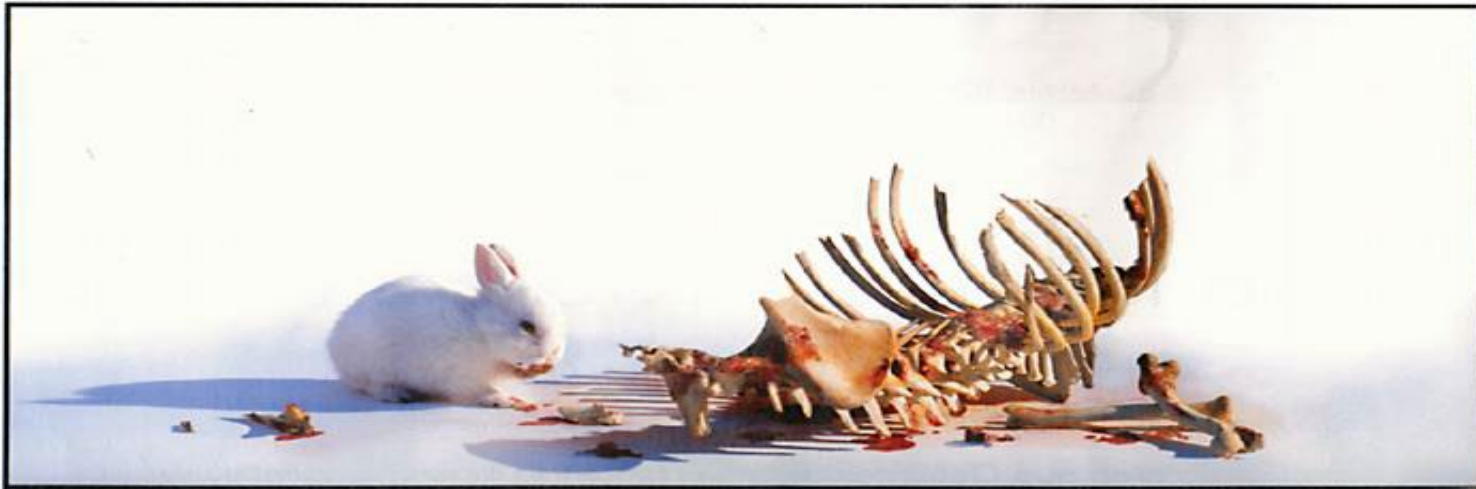
**Always be alert  
and then wait.  
Perhaps what  
you're looking  
for, will find  
you...**



MICHIGAN STATE  
UNIVERSITY



**Always be ready for any  
surprises in life...**



**Always look at where you're  
going...**



# Be determined in achieving your goals...



**Don't let the  
situation  
confuse you...**



And most of all . . .

**KEEP ON  
SMILING!!!**







*"It was not our wealth that made our highways possible; rather it was our highways that made our wealth possible."*

Thomas Harris "Chief" MacDonald  
Commissioner of the Bureau of Public Roads (1939-1953)