

HPMS Updates 2012 RPUG Conference

Justin Clarke, FHWA

Office of Policy and Governmental Affairs

HPMS Related Updates

NCHRP 20-24 (82)

“Increasing Consistency in the Highway Performance Monitoring System for Pavement Reporting”

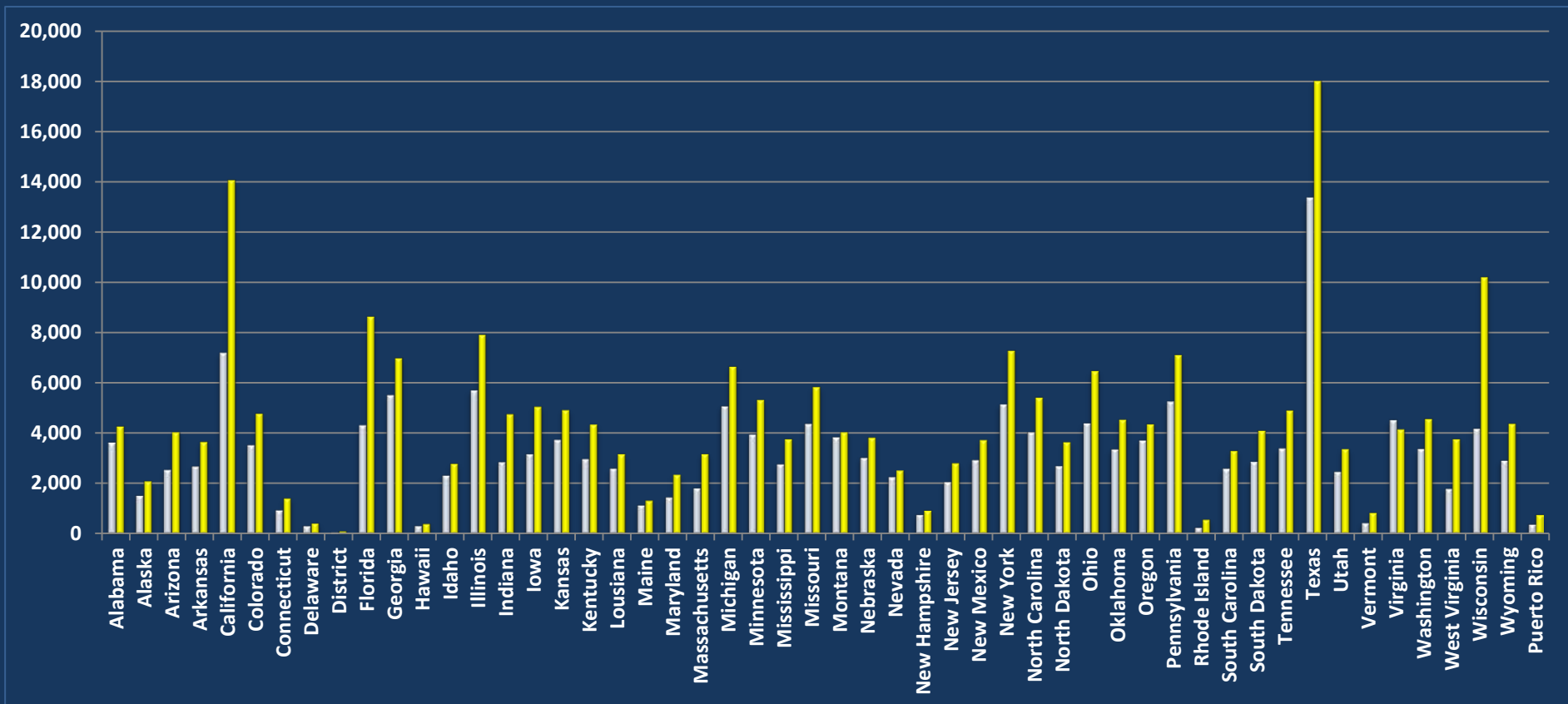
- Comparison of State Pavement Management data with that from HPMS
- About 1/3 of the way through the project
- Survey of States ongoing
- Next Step Review of 2011 data and comparison to State data
 - Continuous Data vs. Sampling

MAP-21 NHS Changes

- National Highway System (NHS) expansion
October 1, 2012
- New NHS to include all Principal Arterial Roadways
- Implications for Pavement data collection
 - IRI reporting required annually for IRI sections (3 year cycle for other roadways)
 - First full data reporting year likely 2013

MAP-21 NHS Changes

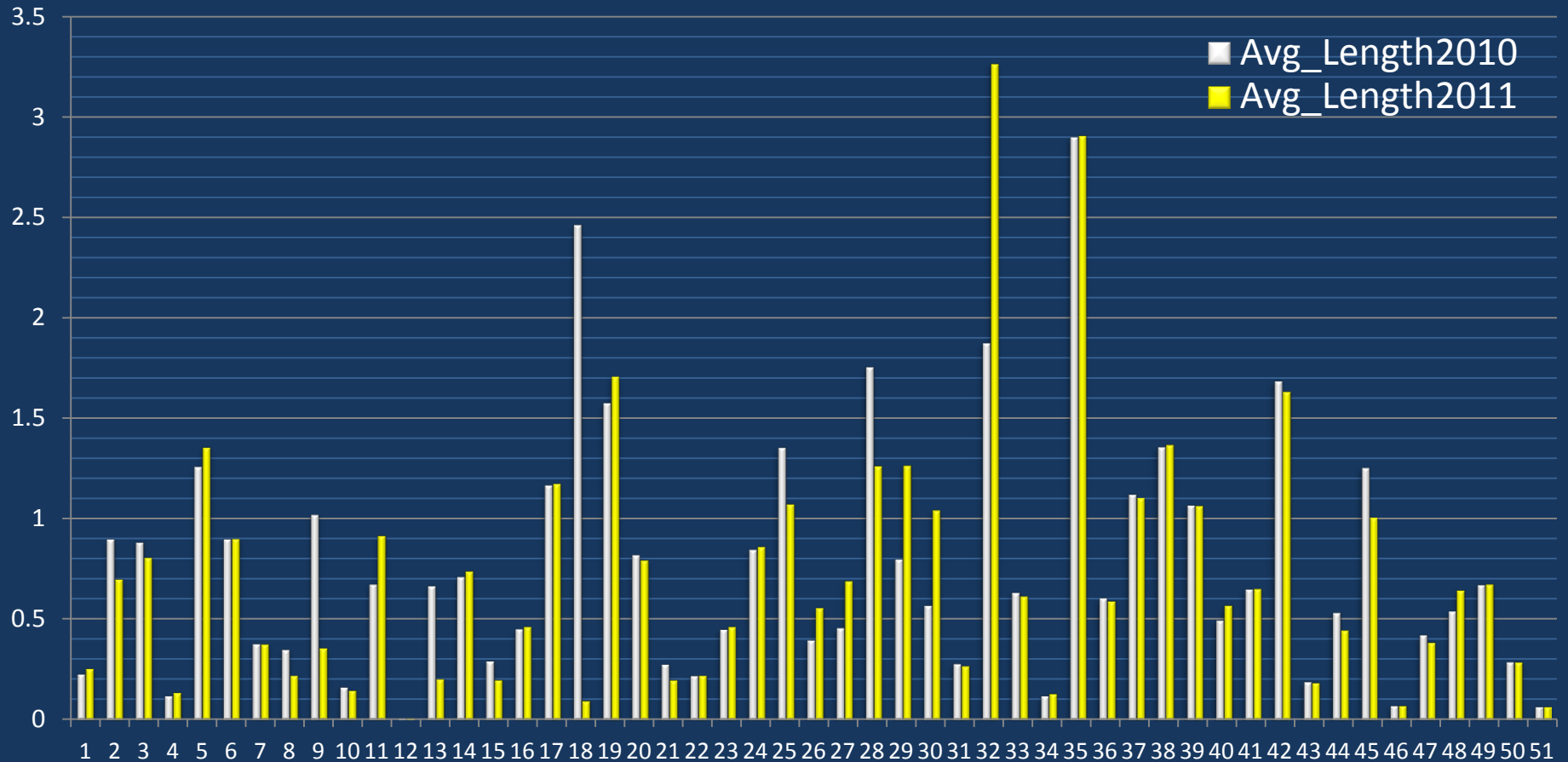
Preliminary Comparison of Pre and Post MAP-21 NHS Mileage by State



Median change in 2010 mileage from NHS to ENHS = 35%

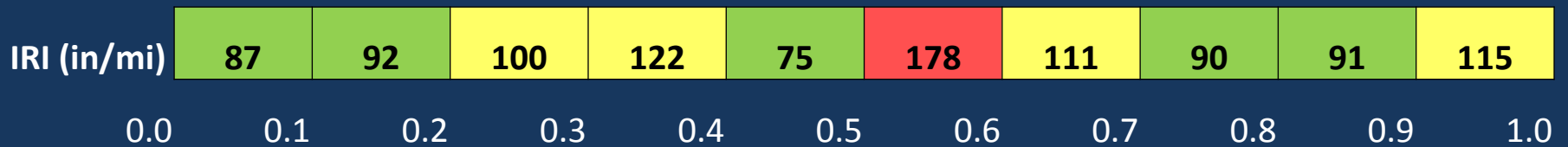
Data Consistency

Average HPMS IRI Reporting Lengths

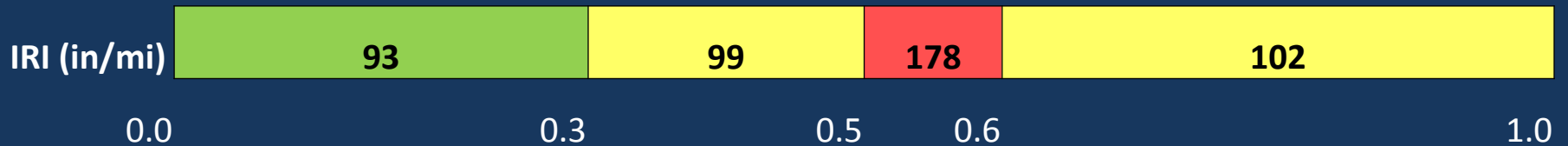


Data Consistency Example

%IRI<95: 50.0

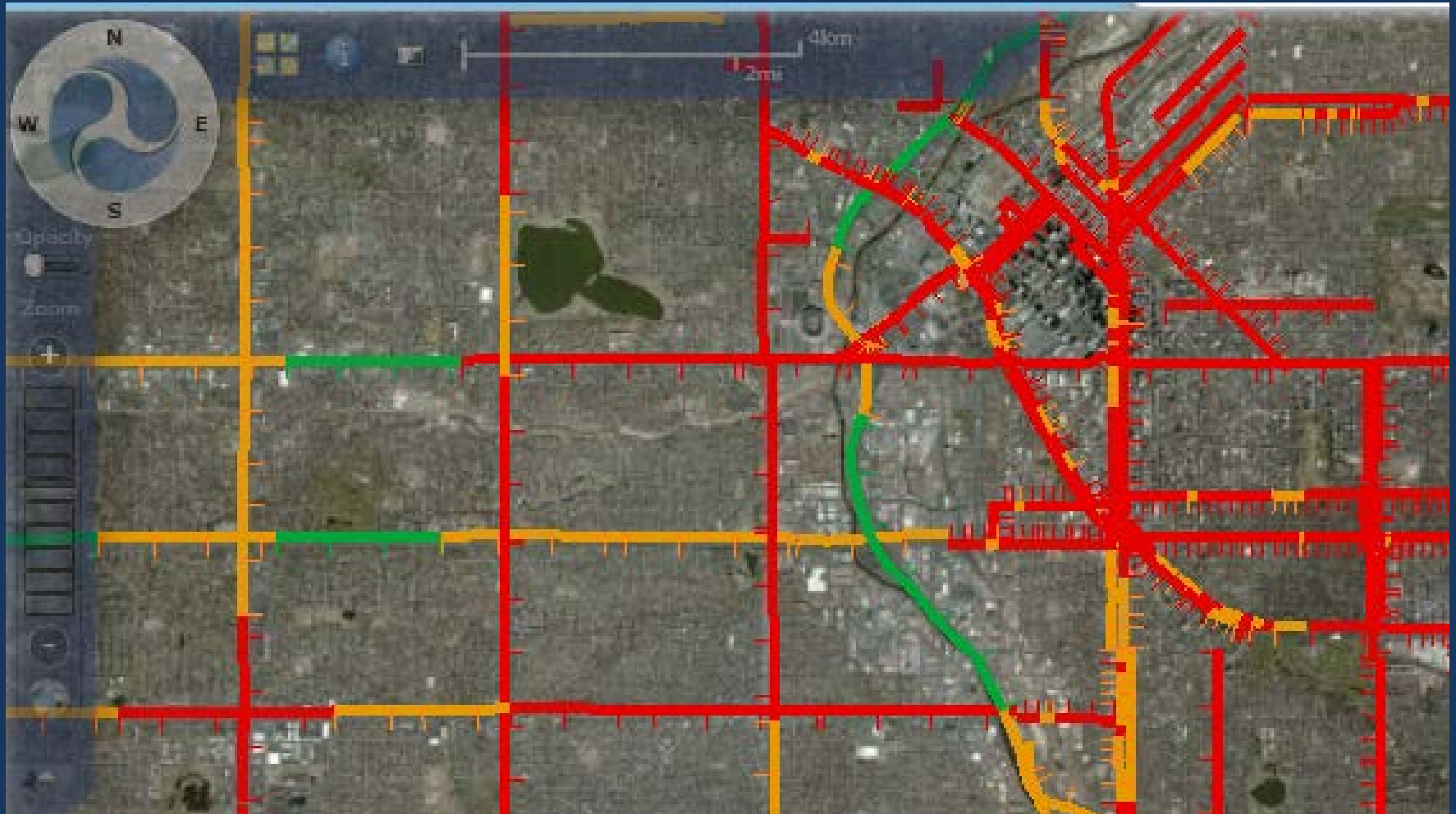


%IRI<95: 30.0

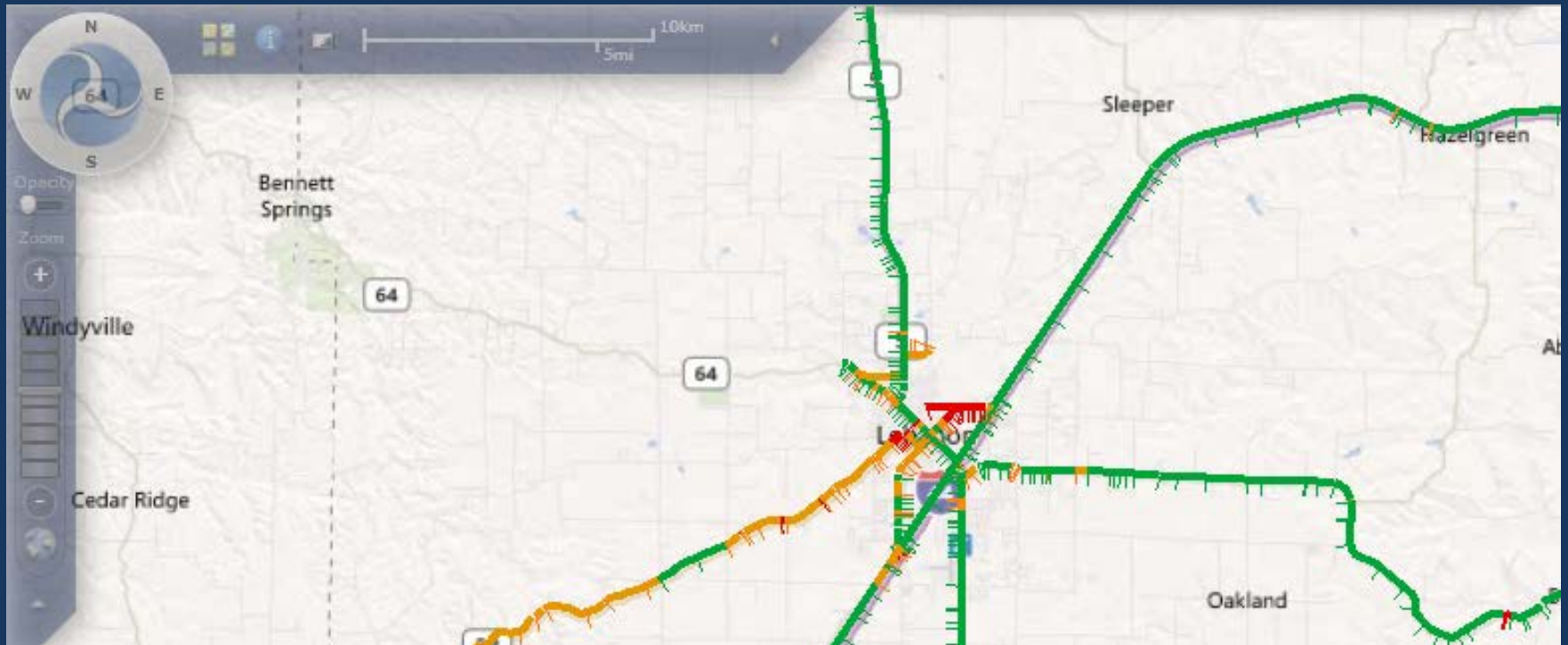


IRI Reporting Bins (for Performance Measures): <95, 95-170, >170

Example of 2011 IRI Sections



Example of 2011 IRI Sections



Coming Attractions

- New Pavement Validations
 - New data model (adopted 2010)
 - Applications of Cross-Checks for New Pavement Items – Cracking, Rutting, Faulting, etc.
 - Expansion of new items is nascent
- Accommodation of Dual Carriageway Systems in HPMS - 2014
 - State plan for data collection required 2013
 - Implications for data reporting TBD

HPMS Software Enhancements

U.S. Department of Transportation
Federal Highway Administration

Highway Performance Monitoring System v8.0

Submittal Review National

DATA EDITORS DATA VALIDATION SAMPLE MANAGEMENT CALCULATION REPORTS & ANALYSIS SUBMIT DATA ADMIN HELP EXIT

Sample Drill

Year: 2011 State: 8 - Colorado

Drill

Sort: F_System

Search...

Sample_ID

F_System

1 5

Urban_Code

Facility_Type

Through_Lanes

AADT

Volume_Group

Pick Volume Groups

<input type="checkbox"/>	7	90
<input checked="" type="checkbox"/>	8	64
<input checked="" type="checkbox"/>	9	31

All None

Category Inventory

Refresh

Map

Contact Info

Justin Clarke,

FHWA (HPPI – 20)

Phone: 202.366.9245

Email: justin.clarke@dot.gov