

Construction of Smooth Asphalt Pavements

Amy Simpson

MACTEC Engineering and Consulting, Inc.

2008 Road Profilers Users' Group

Austin, Texas



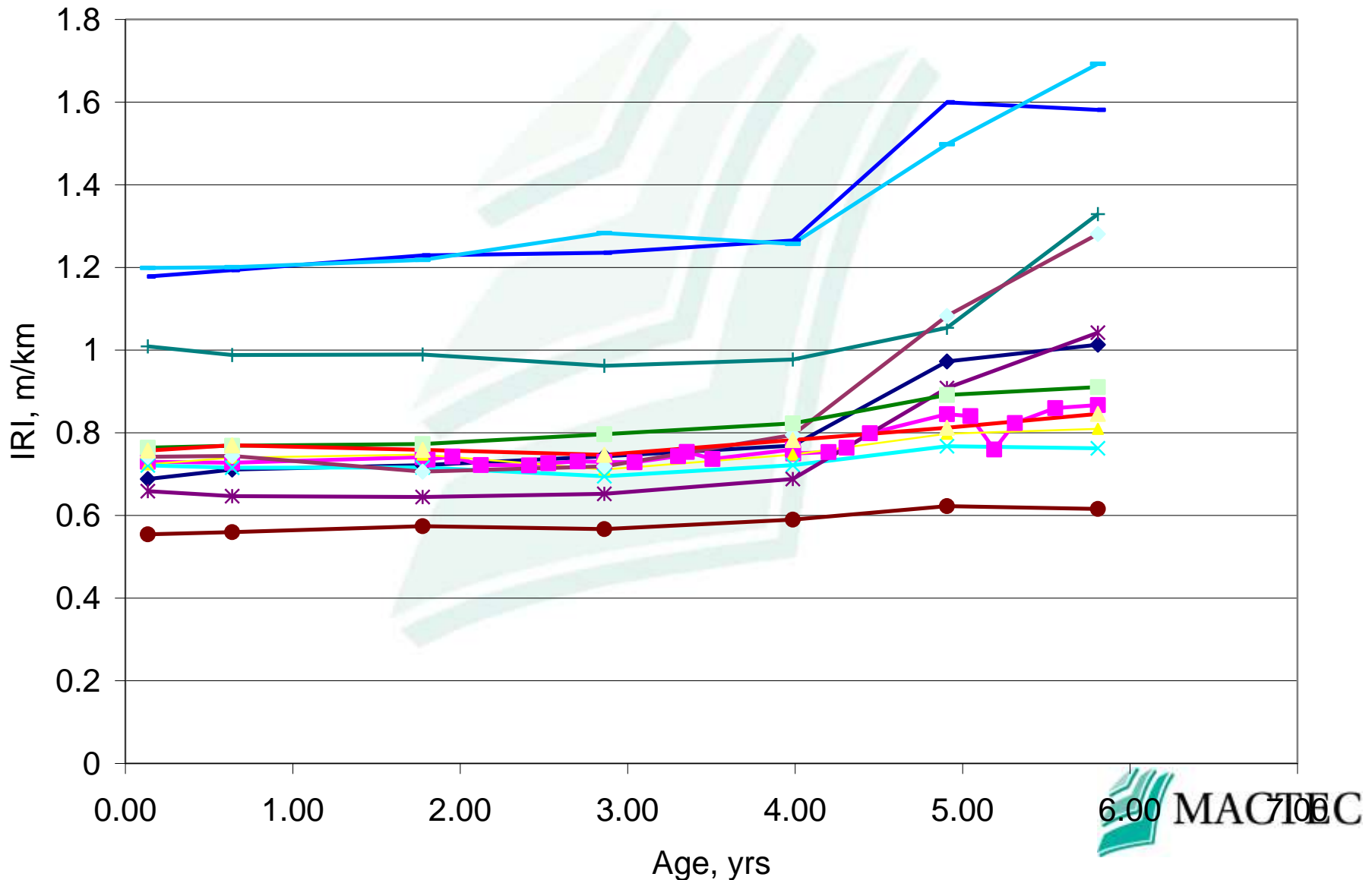
Presentation Outline

- Introduction
- Data Collection
- Evaluation
- Summary

Background

- Smooth pavements last longer and provide improved fuel efficiency
- A number of agencies have transitioned to IRI-based smoothness specifications
- Smoothness specifications identify minimum ride quality expectations for new pavement surfaces

Progression of Roughness on New AC



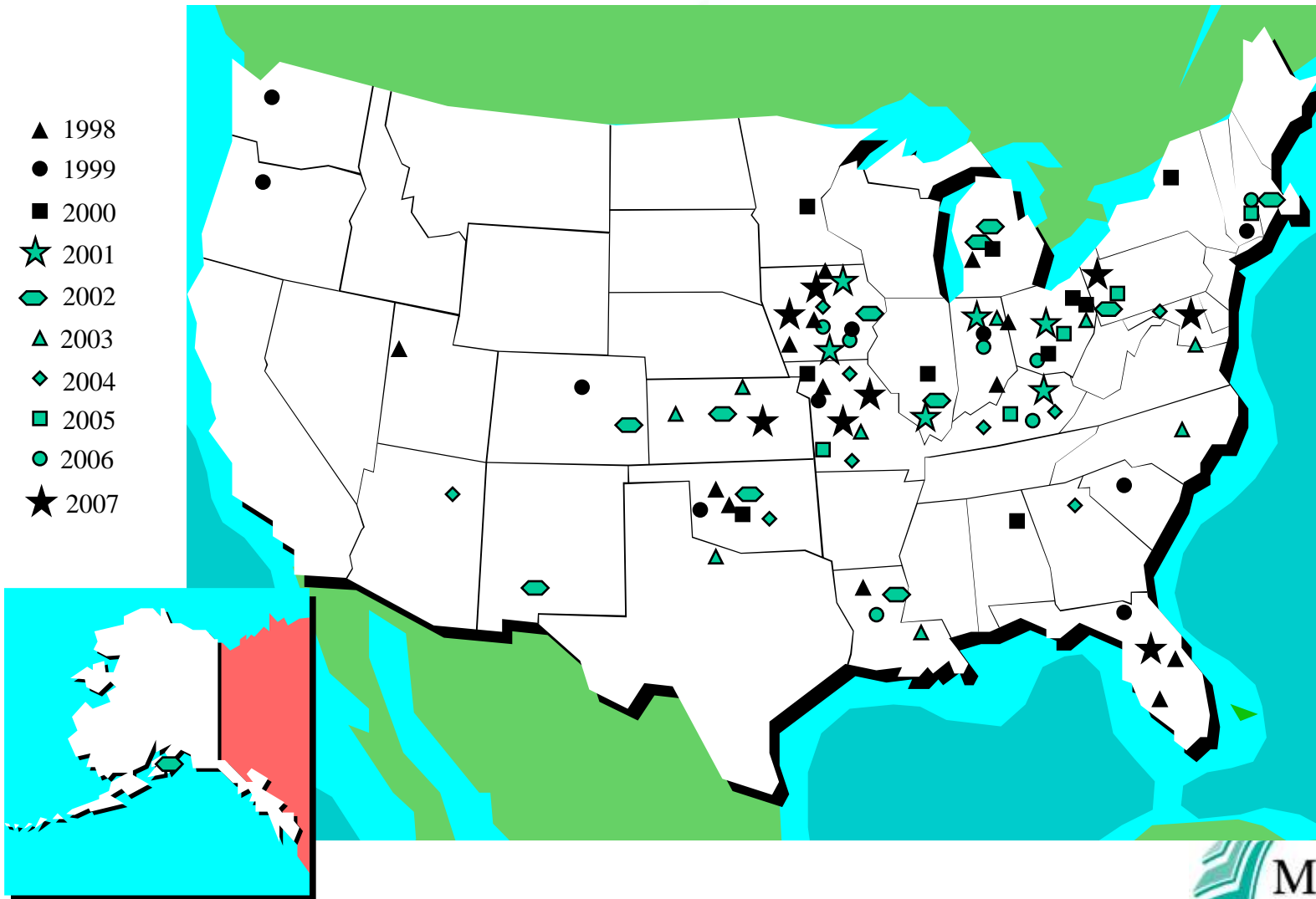
Sheldon G. Hayes Award

- NAPA presents Sheldon G. Hayes award each year to a construction contractor and owner agency
- Each year 5 to 15 nominees are selected from Quality in Construction sites
- Entries are evaluated by a committee for further evaluation
- Sites include new or overlay construction of any road, highway, airport, or commercial construction

Site Evaluation

- Evaluation of the sites are performed approximately 1 year after opening to traffic
- Since 1998 evaluation has included ride quality
- Profile collected at 6-inch intervals with a minimum of 2 passes of each lane included in the construction

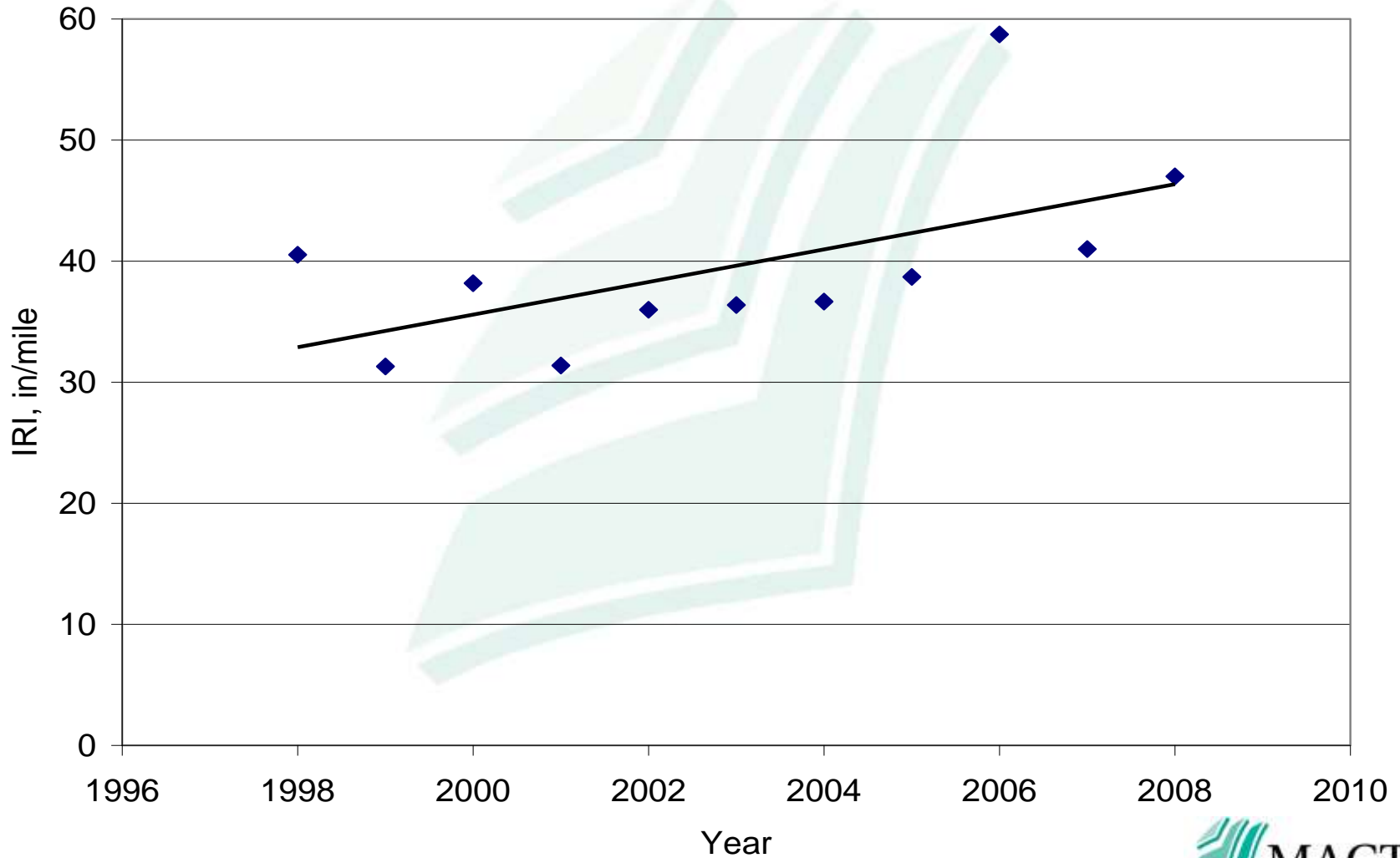
Location of Sites



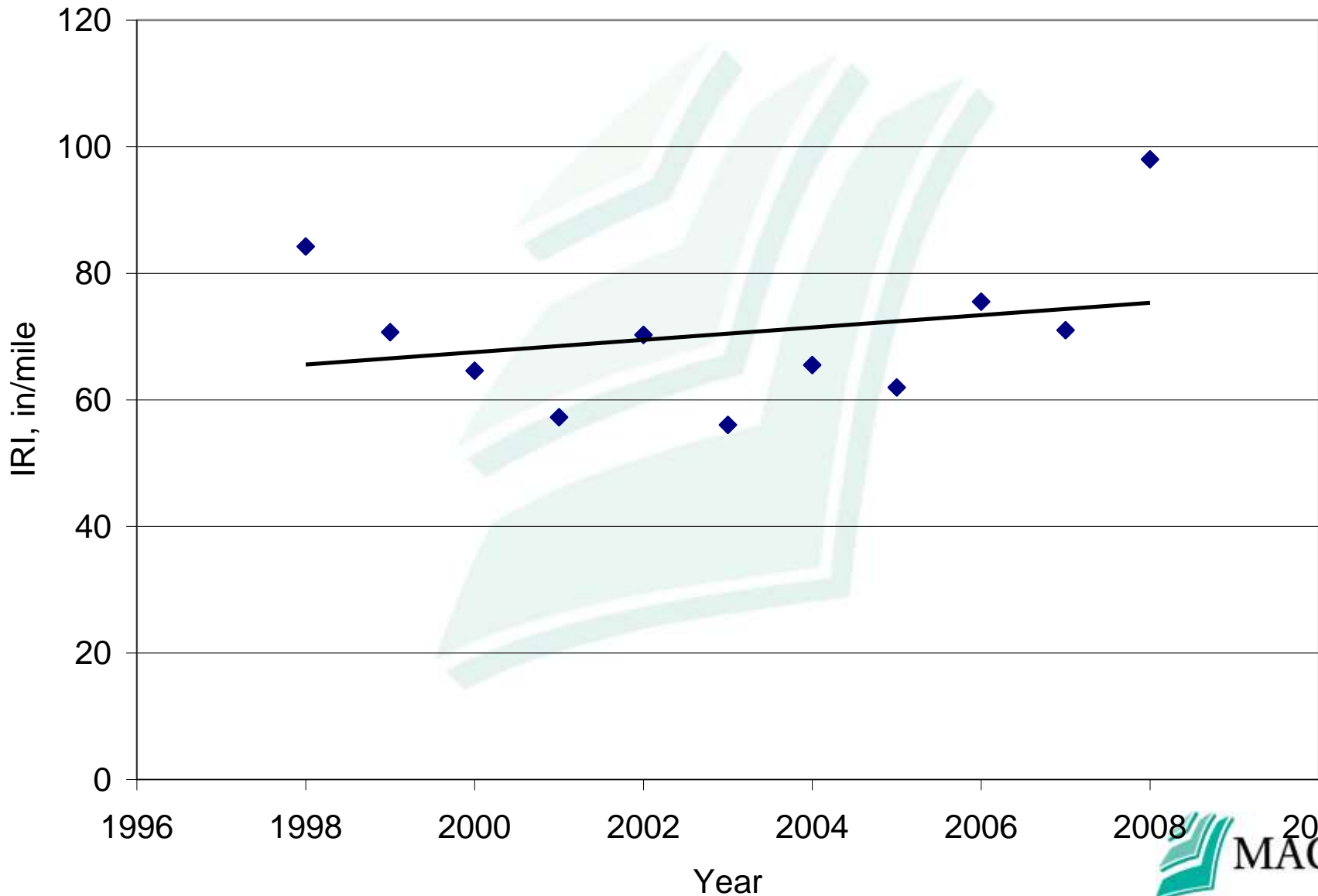
Data Collection Vehicle



IRI of Smoothest Projects



IRI of Roughest Projects



Conclusions

- Smooth pavements last longer and provide a more satisfactory ride to users
- Over time a number of State agencies have transitioned to IRI-based specs
- The Sheldon G. Hayes nominee projects do not show a definitive improvement in ride quality

Questions

